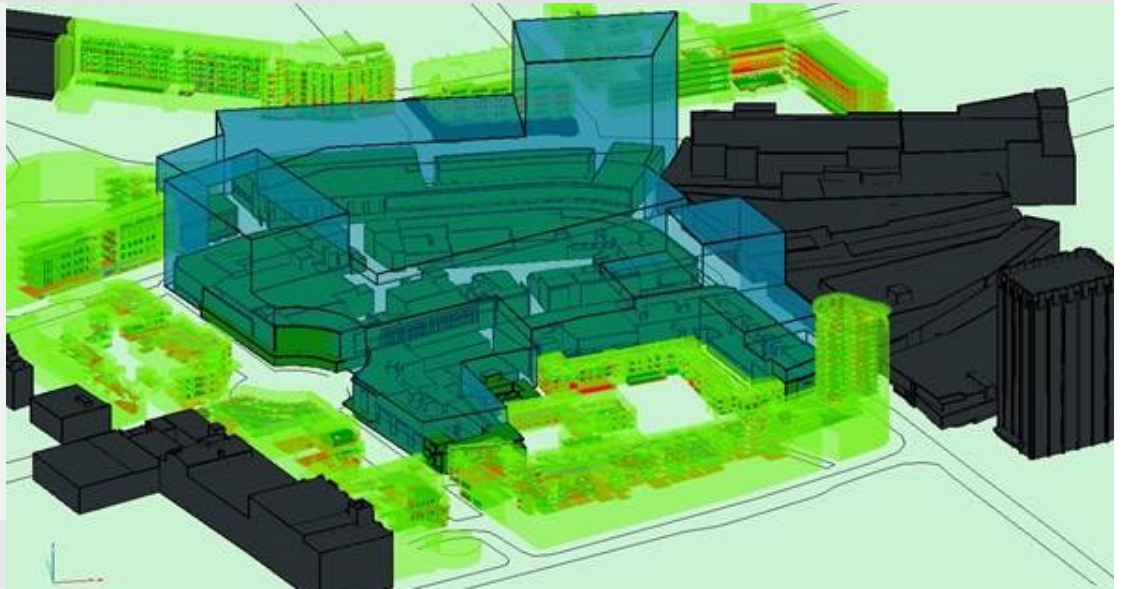


Client

PRIVATE

**Services**

RIGHTS TO LIGHT

Project

This project relates to the significant redevelopment of Bristol City Centre. The site occupies 3.48 hectares and proposals include more than 100,000 sq m of retail, leisure and hospitality facilities and circa 150 homes.

What we did

Our brief was to undertake a technical appraisal of Rights to Light and Daylight & Sunlight Amenity matters arising from the proposals and to present our findings within an Expert report for Planning purposes.

The analysis carried out considered the affect and impact upon over 40 neighbouring properties, over 1,000 rooms and over 2,000 windows across commercial, residential, religious and Listed properties.

What we achieved

Our analysis, which involved detailed investigations, data gathering and the construction of a comprehensive 3D model was turned around with the issuing of our report in 6 weeks. The data produced was reviewed and presented in an easy to comprehend format in an Expert report.