

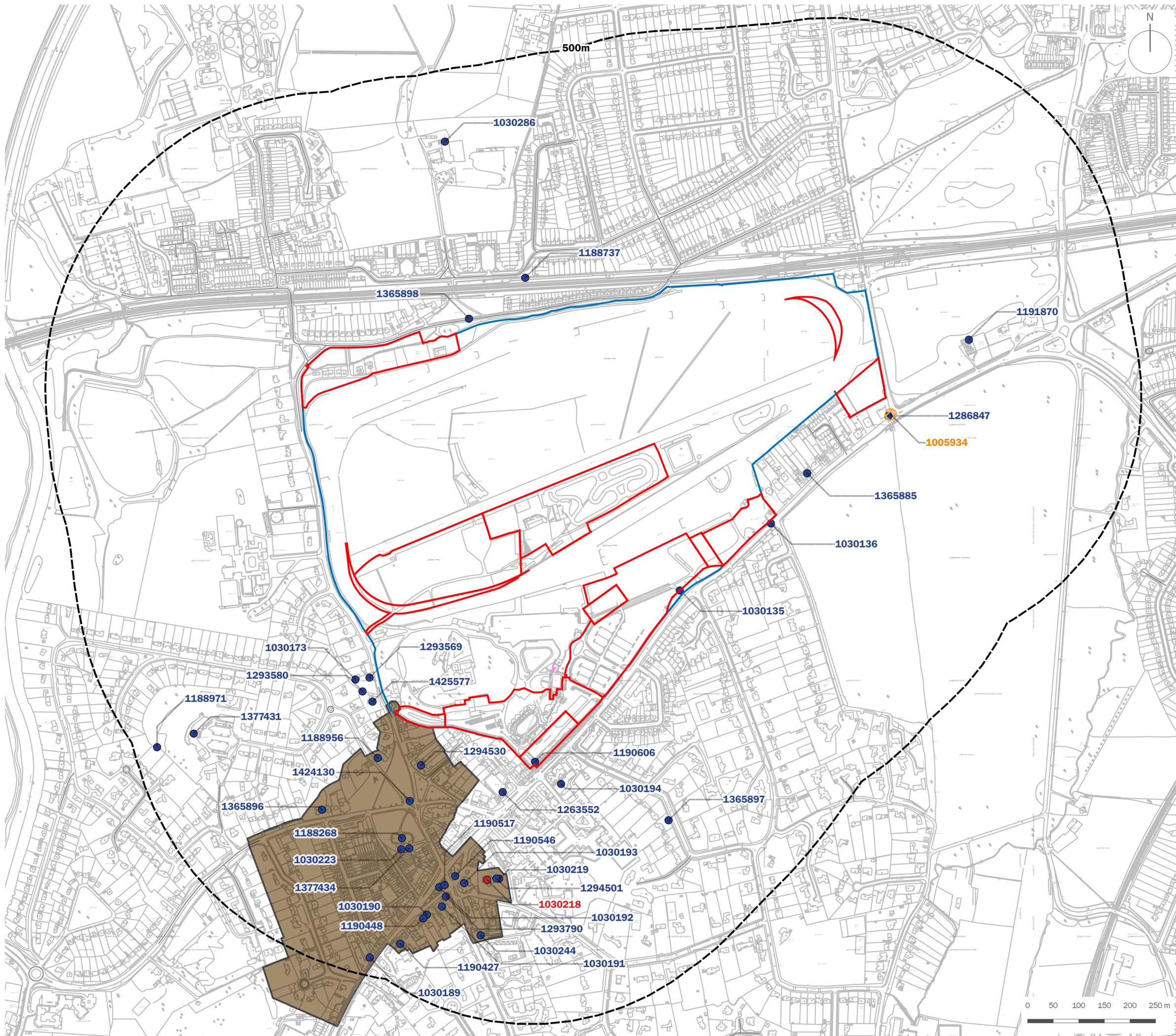
This page has been left blank intentionally



Plans

- Plan EDP 1** Designated Heritage Assets
(edp5237_d001c 04 February 2019 LB/E0)
- Plan EDP 2** Non-designated Heritage Assets
(edp5237_d002c 04 February 2019 LB/E0)
- Plan EDP 3** Extracts from Historic Mapping
(edp5237_d003c 04 February 2019 LB/E0)
- Plan EDP 4** Extracts from Historic Mapping
(edp5237_d004c 04 February 2019 LB/E0)

This page has been left blank intentionally

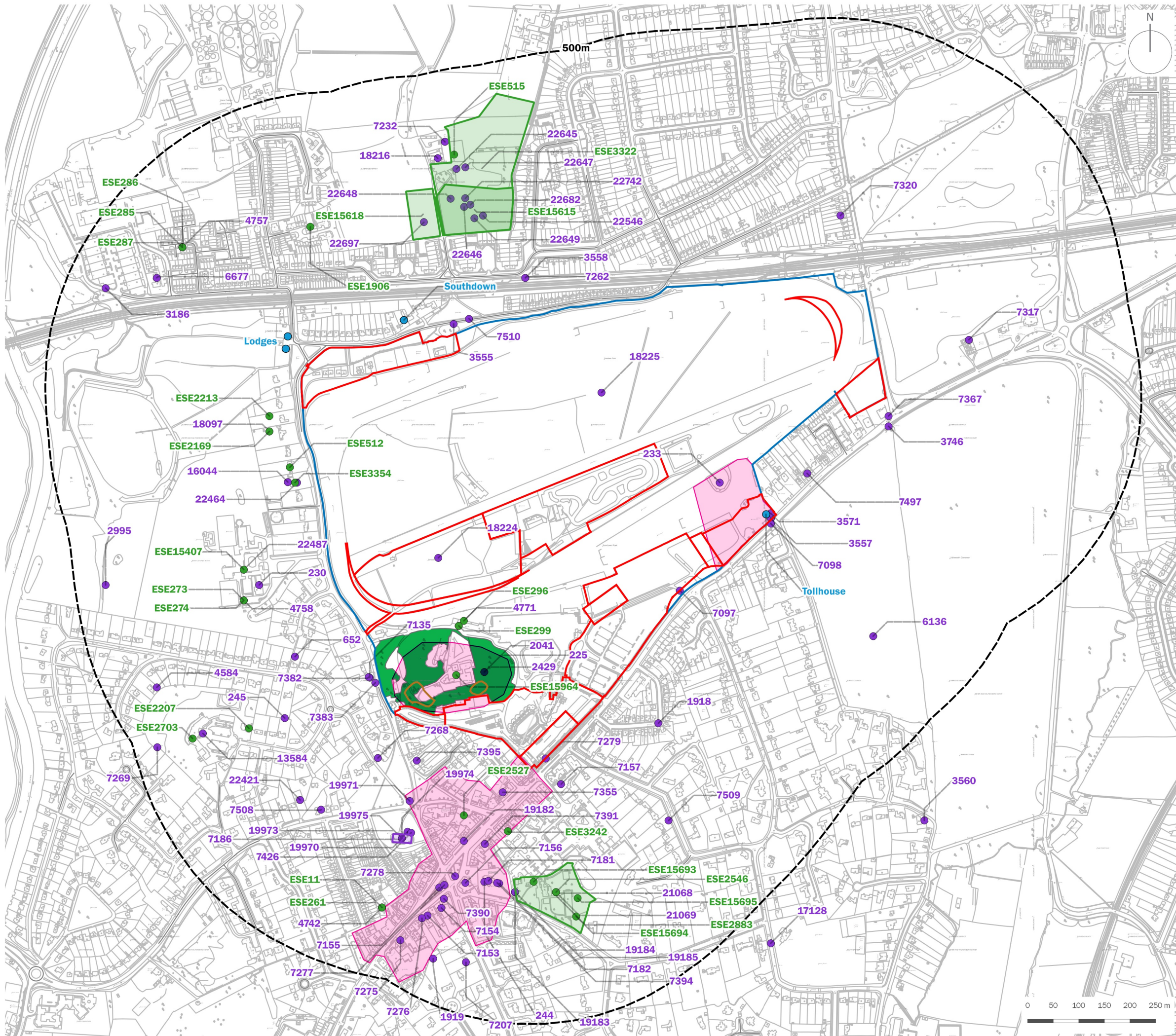


- Individual Development Plots
 - Site Boundary
 - Range Rings (at 1km intervals)
 - Conservation Area
 - Scheduled Monument
- Listed Buildings
- Grade I
 - Grade II

client	The Jockey Club Racecourses Ltd	
project title	Sandown Park Racecourse	
drawing title	Plan EDP 1: Designated Heritage Assets	
date	04 FEBRUARY 2019	drawn by LB
drawing number	edp5237_d001c	checked EO
scale	Refer to scale bar	QA MC



info@edp-uk.co.uk www.edp-uk.co.uk
 Cirencester 01285 740427 Cardiff 02921 671900 Shrewsbury 01939 211190



- Individual Development Plots
- Site Boundary
- Range Rings (at 1km intervals)
- Monuments
- Events
- Areas of High Archaeological Potential
- 1945 Excavation Areas
- Locally Listed Buildings
- The Warren

client
The Jockey Club Racecourses Ltd

project title
Sandown Park Racecourse

drawing title
Plan EDP 2: Non-designated Heritage Assets

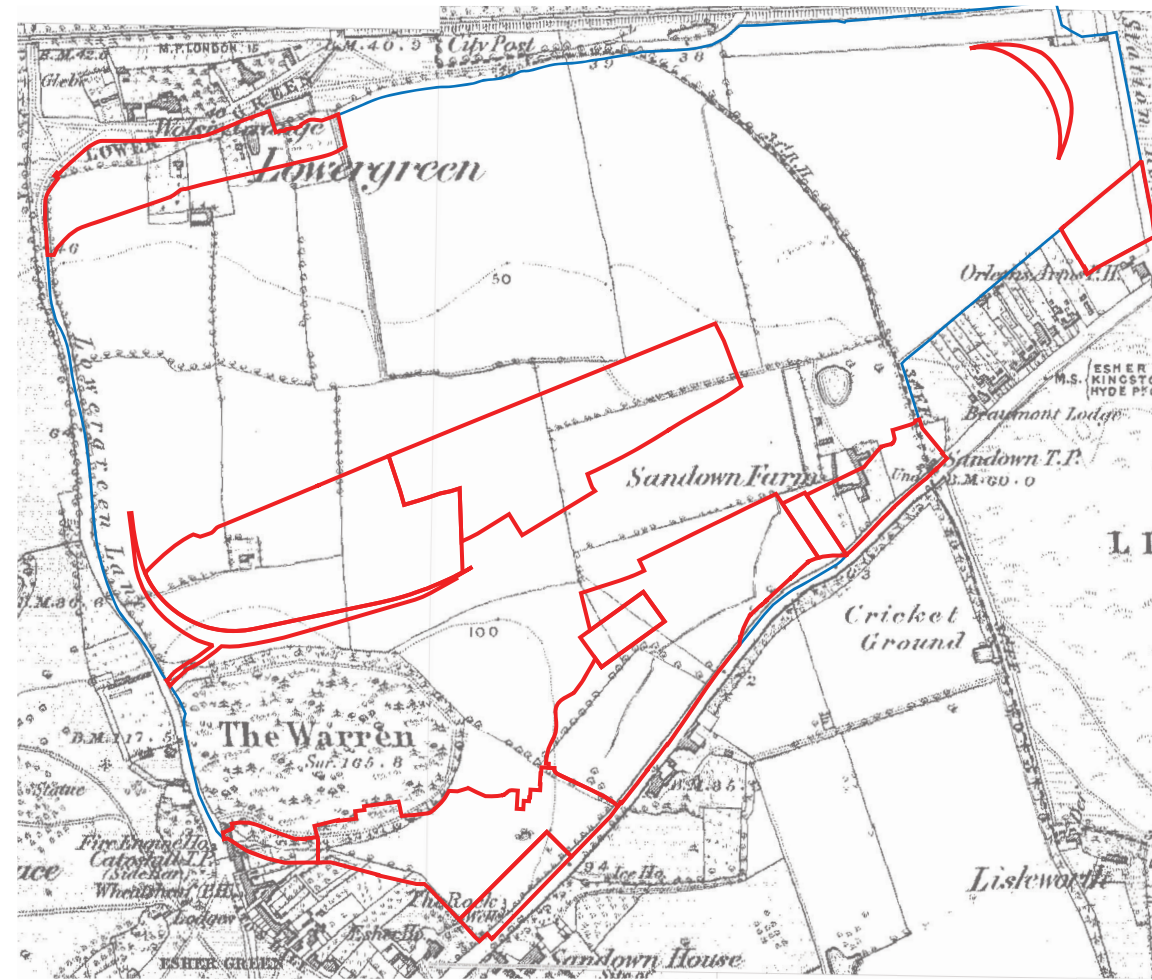
date	04 FEBRUARY 2019	drawn by LB
drawing number	edp5237_d002c	checked EO
scale	Refer to scale bar	QA MC

the environmental
dimension partnership

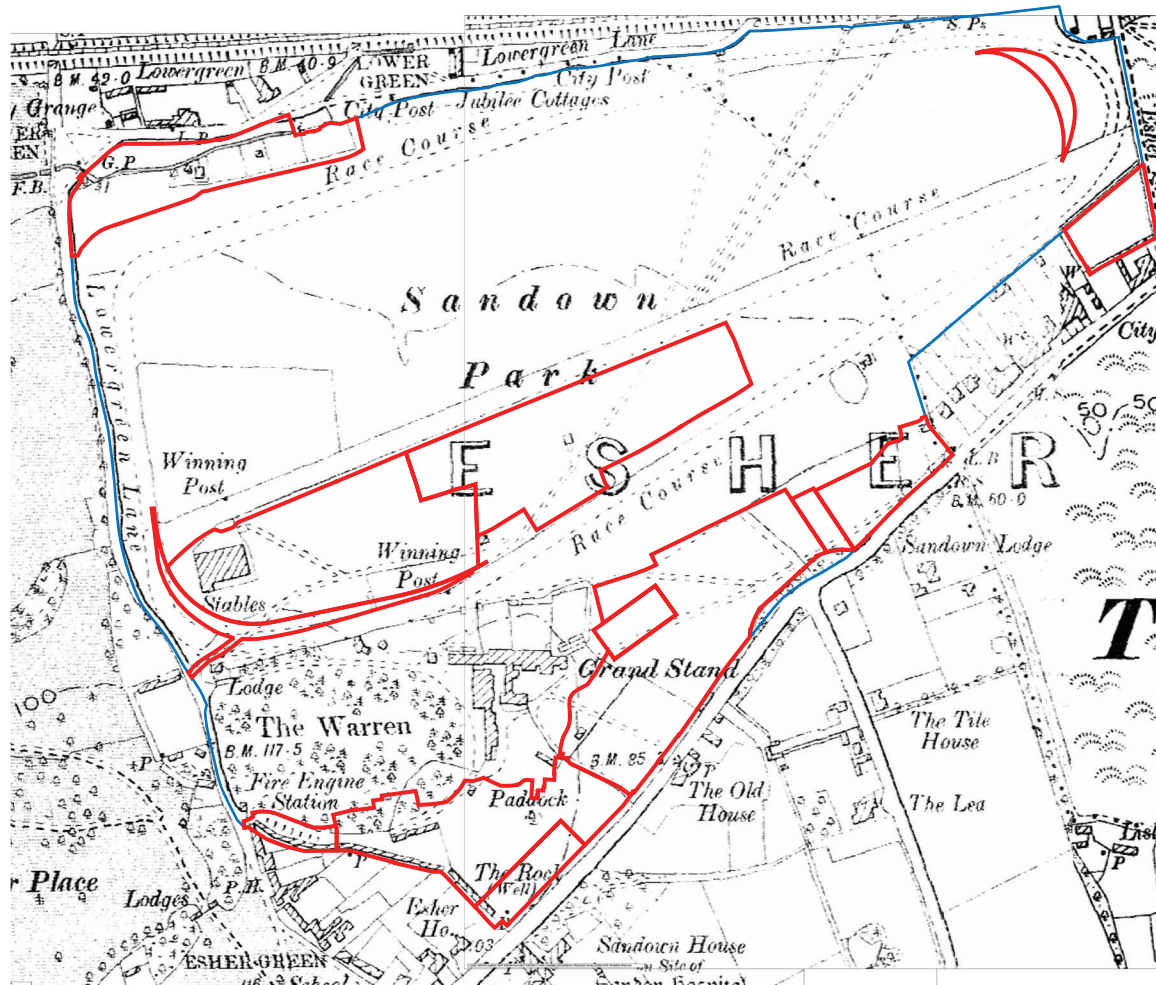
info@edp-uk.co.uk www.edp-uk.co.uk
 Cirencester 01285 740427 Cardiff 02921 671900 Shrewsbury 01939 211190



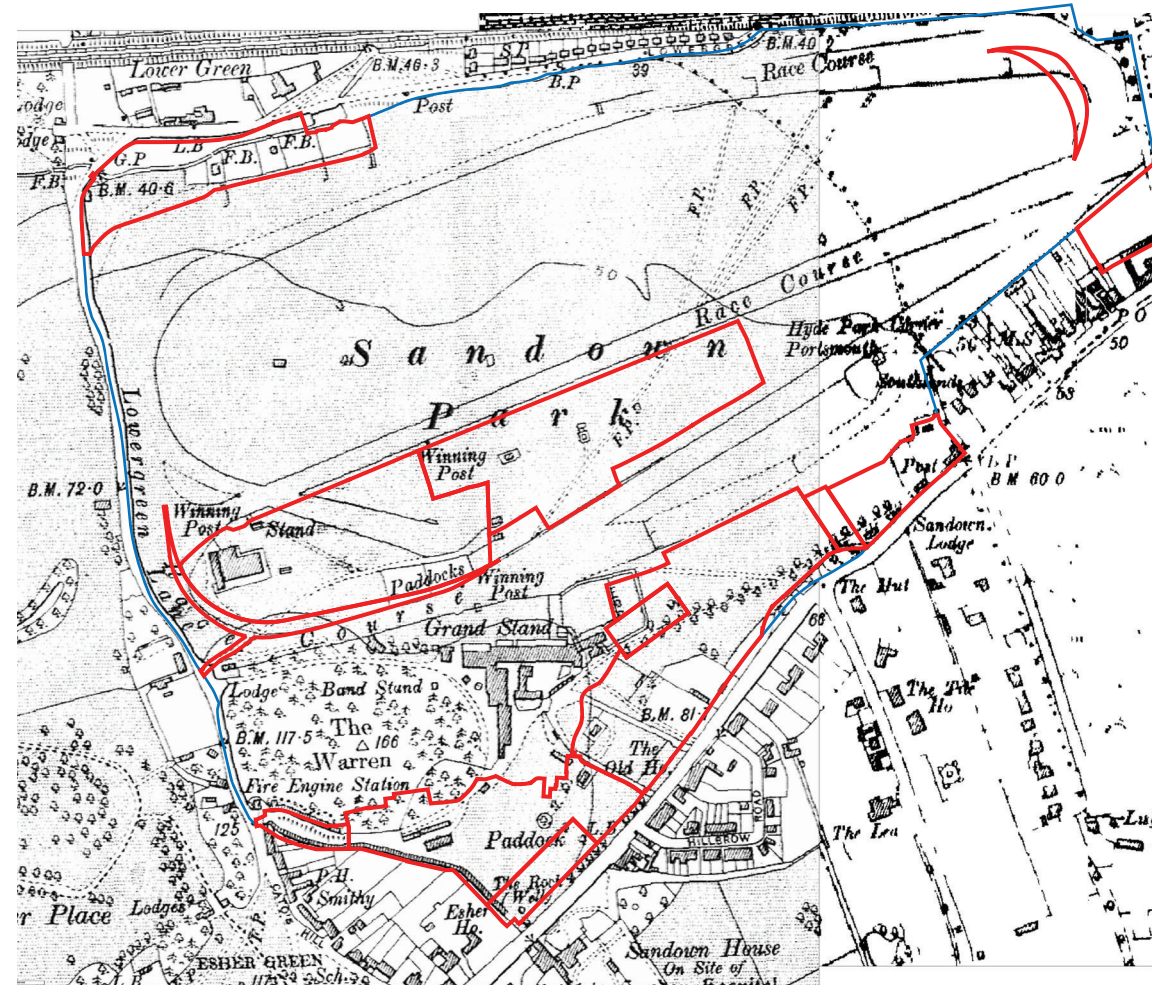
a) 1847



b) 1871



c) 1897



d) 1914-1920

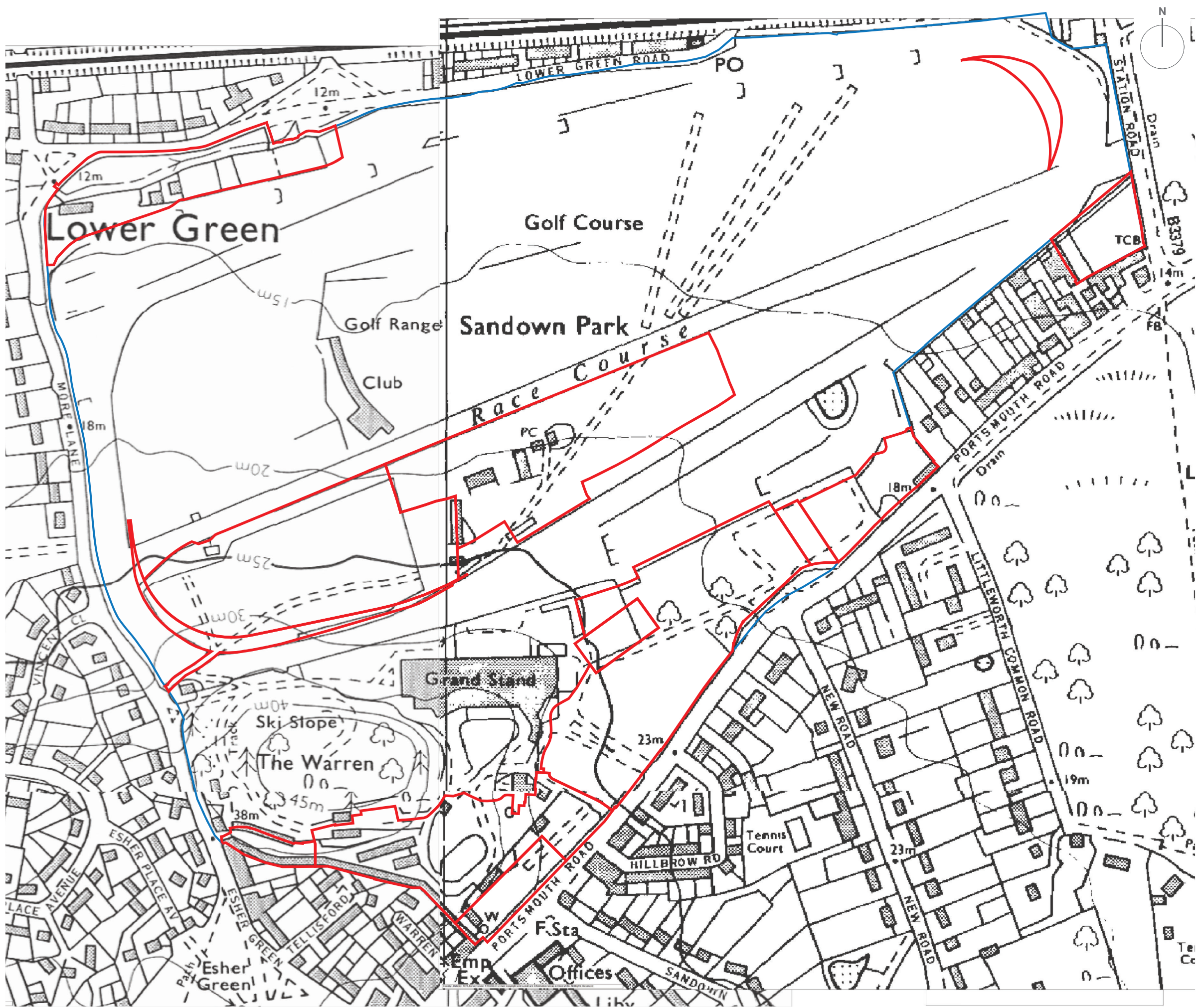
- Approximate Individual Development Plots
- Approximate Site Boundary



client	The Jockey Club Racecourses Ltd	
project title	Sandown Park Racecourse	
drawing title	Plan EDP 3: Extracts from Historic Mapping a) 1847 b) 1871 c) 1897 and d) 1914-1920	
date	04 FEBRUARY 2019	drawn by LB
drawing number	edp5237_d003c	checked EO
scale	Not to scale	QA MC



info@edp-uk.co.uk www.edp-uk.co.uk
 Cirencester 01285 740427 Cardiff 02921 671900 Shrewsbury 01939 211190



- Approximate Individual Development Plots
- Approximate Site Boundary

client
The Jockey Club Racecourses Ltd

project title
Sandown Park Racecourse

drawing title
Plan EDP 4: Extracts from Historic Mapping 1975

date	04 FEBRUARY 2019	drawn by	LB
drawing number	edp5237_d004c	checked	EO
scale	Not to scale	QA	MC



info@edp-uk.co.uk www.edp-uk.co.uk
 Cirencester 01285 740427 Cardiff 02921 671900 Shrewsbury 01939 211190



the environmental
dimension partnership

CARDIFF
02921 671900

CHELtenham
01242 903110

CIRENCESTER
01285 740427

SHREWSBURY
01939 211190

info@edp-uk.co.uk
www.edp-uk.co.uk



**Landscape
Institute**
Registered practice

IEMA Transforming the world
to sustainability

**URBAN
DESIGN** REGISTERED
GROUP PRACTICE



The Environmental Dimension
Partnership Ltd. Registered as a
Limited Company in England and
Wales. Company No. 09102431.