

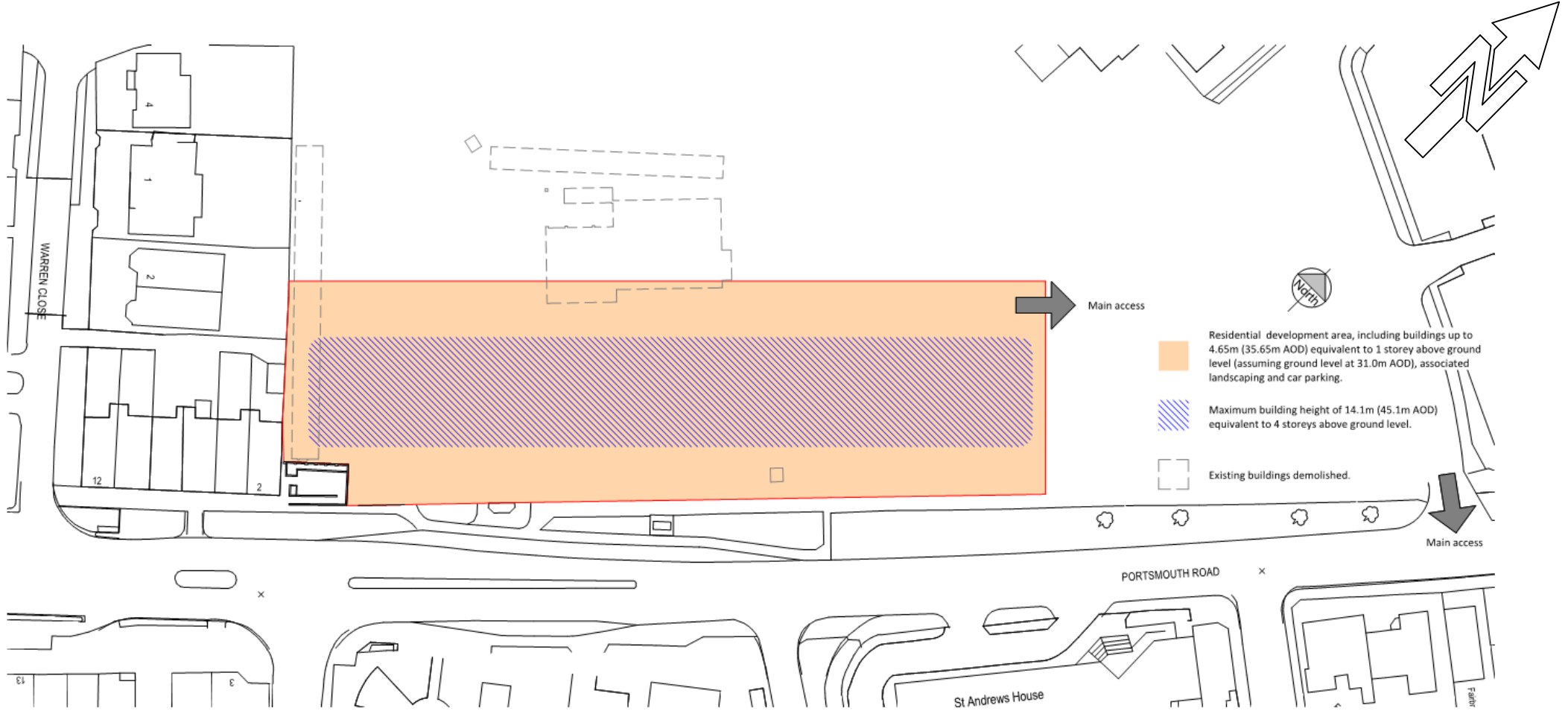
LISTERS GEO
 Geotechnical and Geoenvironmental Consultants

Listers Geotechnical Consultants Ltd www.listersgeotechnics.co.uk Tel: 01327 860060

Title: Site 1 - Indicative Layout

Site: Sandown Park, Portsmouth Road, Esher, KT10 9AJ

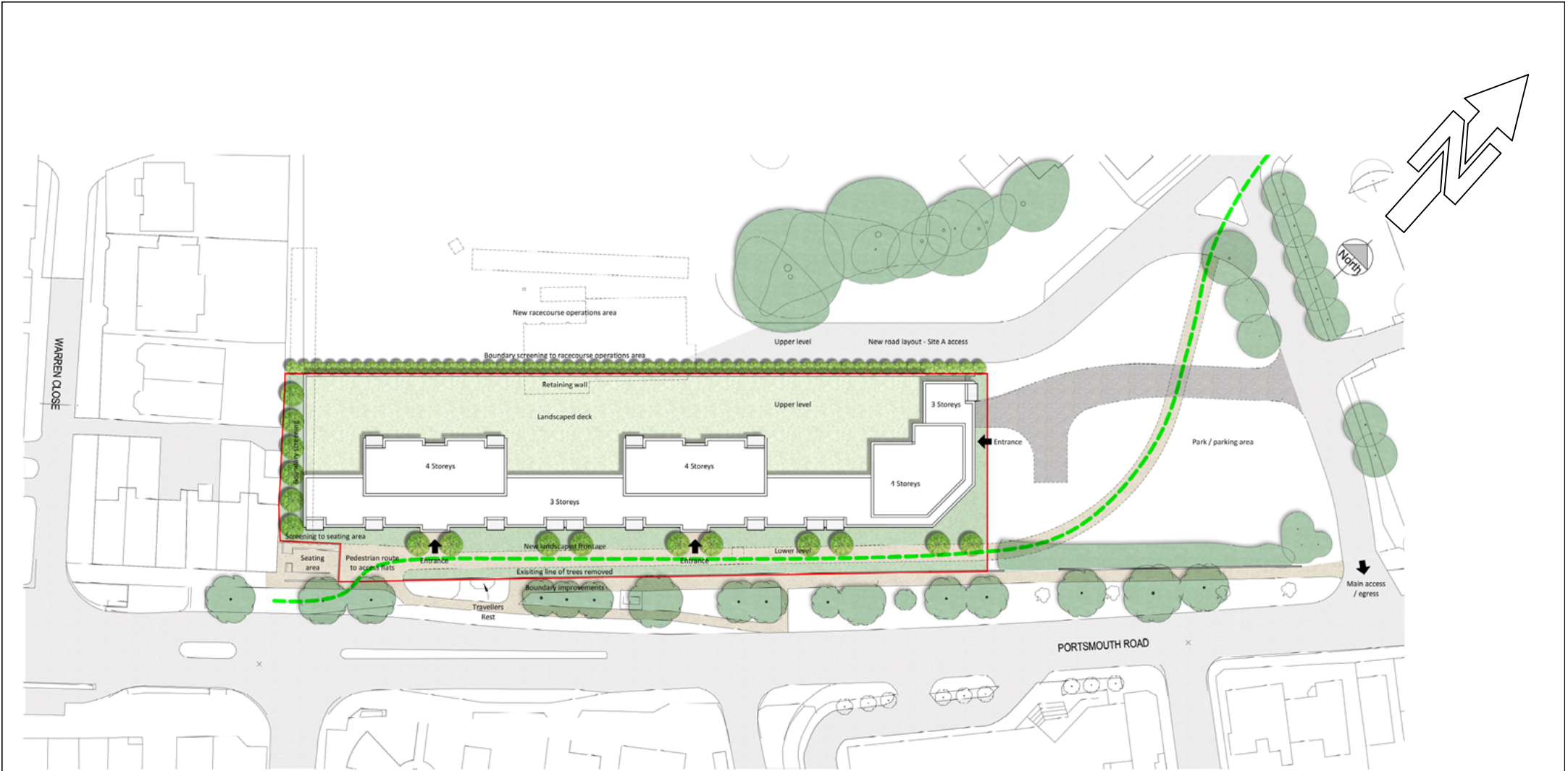
Scale: NTS Job No: 18.10.006 Drawn By: HC



LISTERS GEO
Geotechnical and Geoenvironmental Consultants

Listers Geotechnical Consultants Ltd www.listersgeotechnics.co.uk Tel: 01327 860060

Title: Site 2 Parameter plan		
Site: Sandown Park, Portsmouth Road, Esher, KT10 9AJ		
Scale: NTS	Job No: 18.10.006	Drawn By: HC



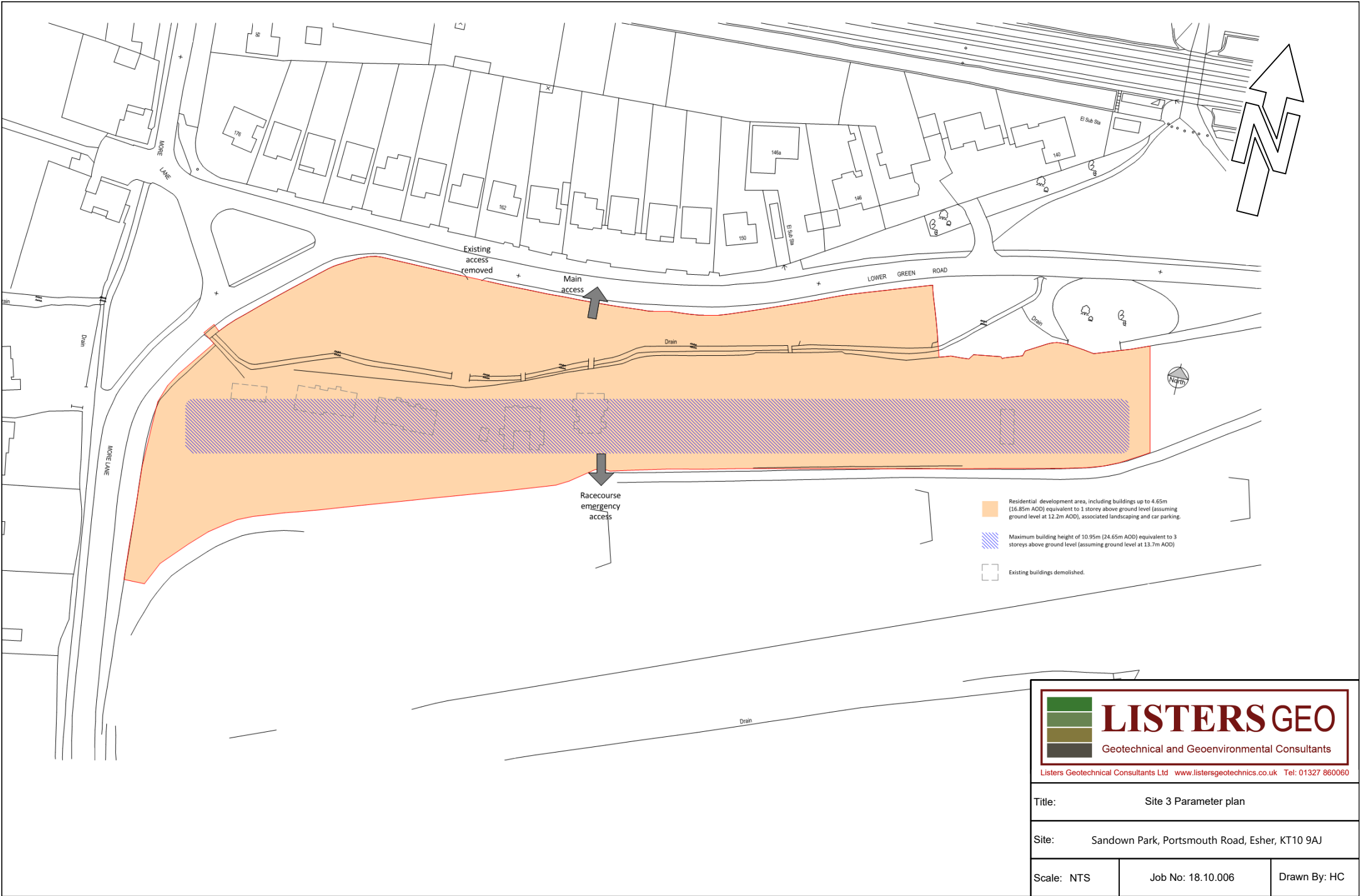

LISTERS GEO
Geotechnical and Geoenvironmental Consultants

Listers Geotechnical Consultants Ltd www.listersgeotechnics.co.uk Tel: 01327 860060

Title: Site 2 - Indicative Layout

Site: Sandown Park, Portsmouth Road, Esher, KT10 9AJ

Scale: NTS	Job No: 18.10.006	Drawn By: HC
------------	-------------------	--------------



- Residential development area, including buildings up to 4.65m (16.85m AOD) equivalent to 1 storey above ground level (assuming ground level at 12.2m AOD), associated landscaping and car parking.
- Maximum building height of 10.95m (24.65m AOD) equivalent to 3 storeys above ground level (assuming ground level at 13.7m AOD)
- Existing buildings demolished.

LISTERS GEO

Geotechnical and Geoenvironmental Consultants

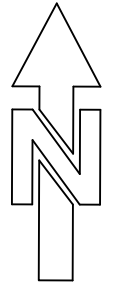
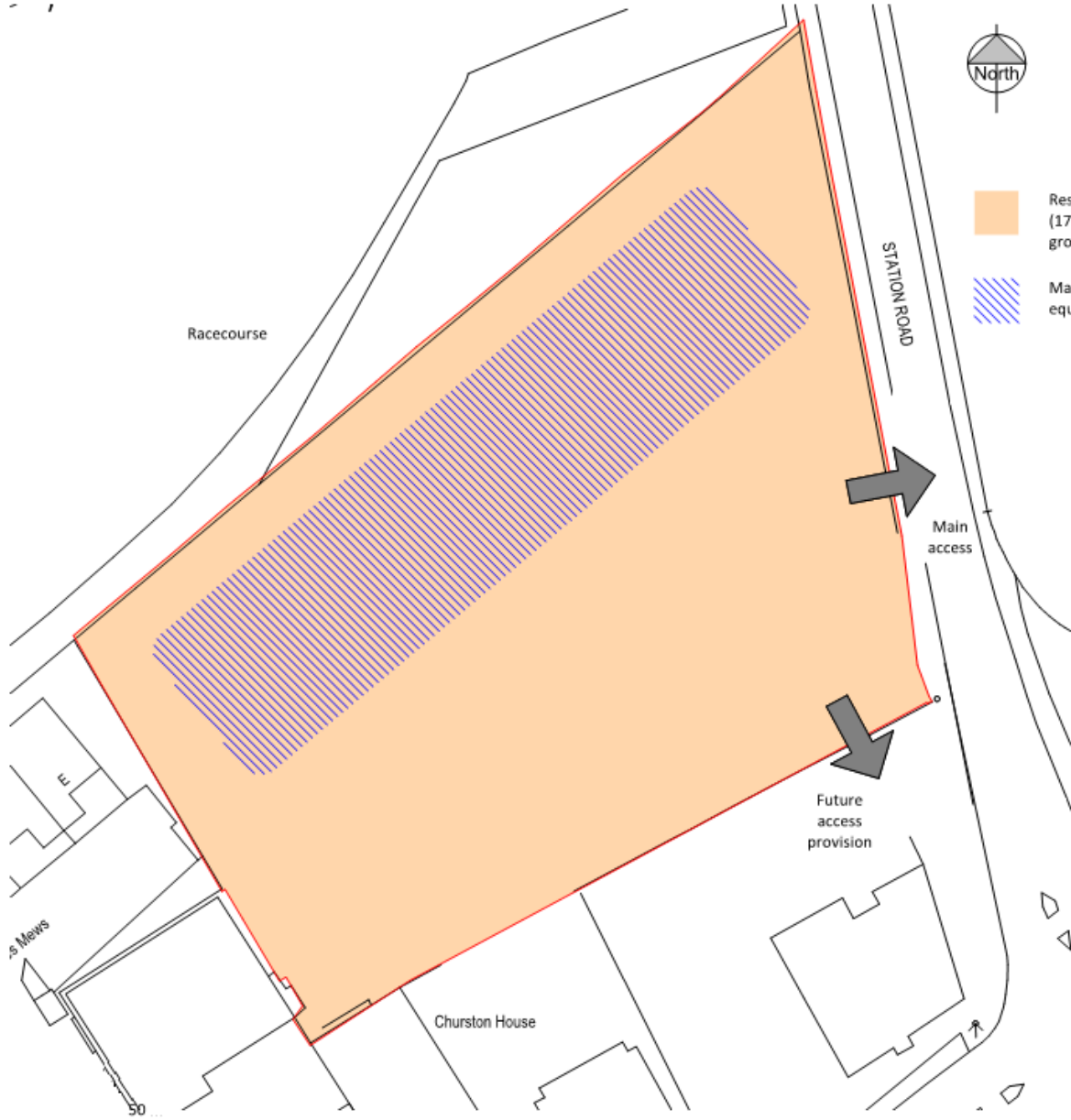
Listers Geotechnical Consultants Ltd www.listersgeotechnics.co.uk Tel: 01327 860060


Title: Site 3 Parameter plan	
Site: Sandown Park, Portsmouth Road, Esher, KT10 9AJ	
Scale: NTS	Job No: 18.10.006
Drawn By: HC	




Villas

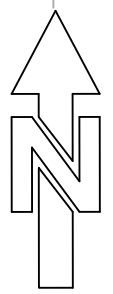
 LISTERS GEO Geotechnical and Geoenvironmental Consultants		
<small>Listers Geotechnical Consultants Ltd www.listersgeotechnics.co.uk Tel: 01327 860060</small>		
Title:		Site 3 - Indicative Layout
Site:		Sandown Park, Portsmouth Road, Esher, KT10 9AJ
Scale: NTS	Job No: 18.10.006	Drawn By: HC



 Residential development area, including buildings up to 4.65m (17.95m AOD) equivalent to 1 storey above ground level (assuming ground level at 13.3m AOD), associated landscaping and car parking.

 Maximum building height of 20.4m (33.7m AOD) equivalent to 6 storeys above ground level.

 LISTERS GEO Geotechnical and Geoenvironmental Consultants		
<small>Listers Geotechnical Consultants Ltd www.listersgeotechnics.co.uk Tel: 01327 860060</small>		
Title: Site 4 Parameter plan		
Site: Sandown Park, Portsmouth Road, Esher, KT10 9AJ		
Scale: NTS	Job No: 18.10.006	Drawn By: HC



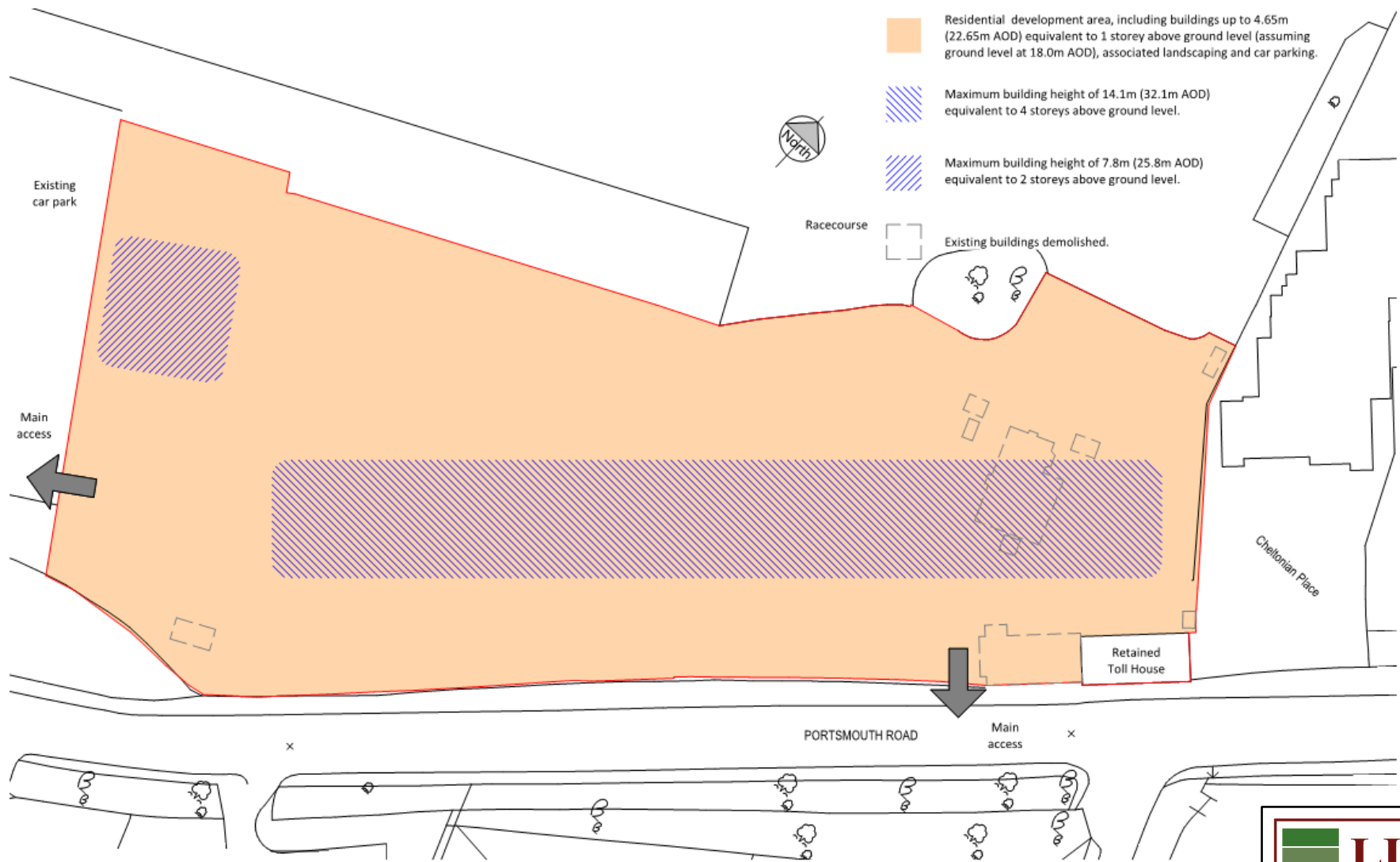
	<h1>LISTERS GEO</h1>
	<p>Geotechnical and Geoenvironmental Consultants</p>

Listers Geotechnical Consultants Ltd www.listersgeotechnics.co.uk Tel: 01327 860060

Title: Site 4 - Indicative Layout

Site: Sandown Park, Portsmouth Road, Esher, KT10 9AJ

Scale: NTS	Job No: 18.10.006	Drawn By: HC
------------	-------------------	--------------



LISTERS GEO
Geotechnical and Geoenvironmental Consultants

Listers Geotechnical Consultants Ltd www.listersgeotechnics.co.uk Tel: 01327 860060

Title: Site 5 Parameter plan

Site: Sandown Park, Portsmouth Road, Esher, KT10 9AJ

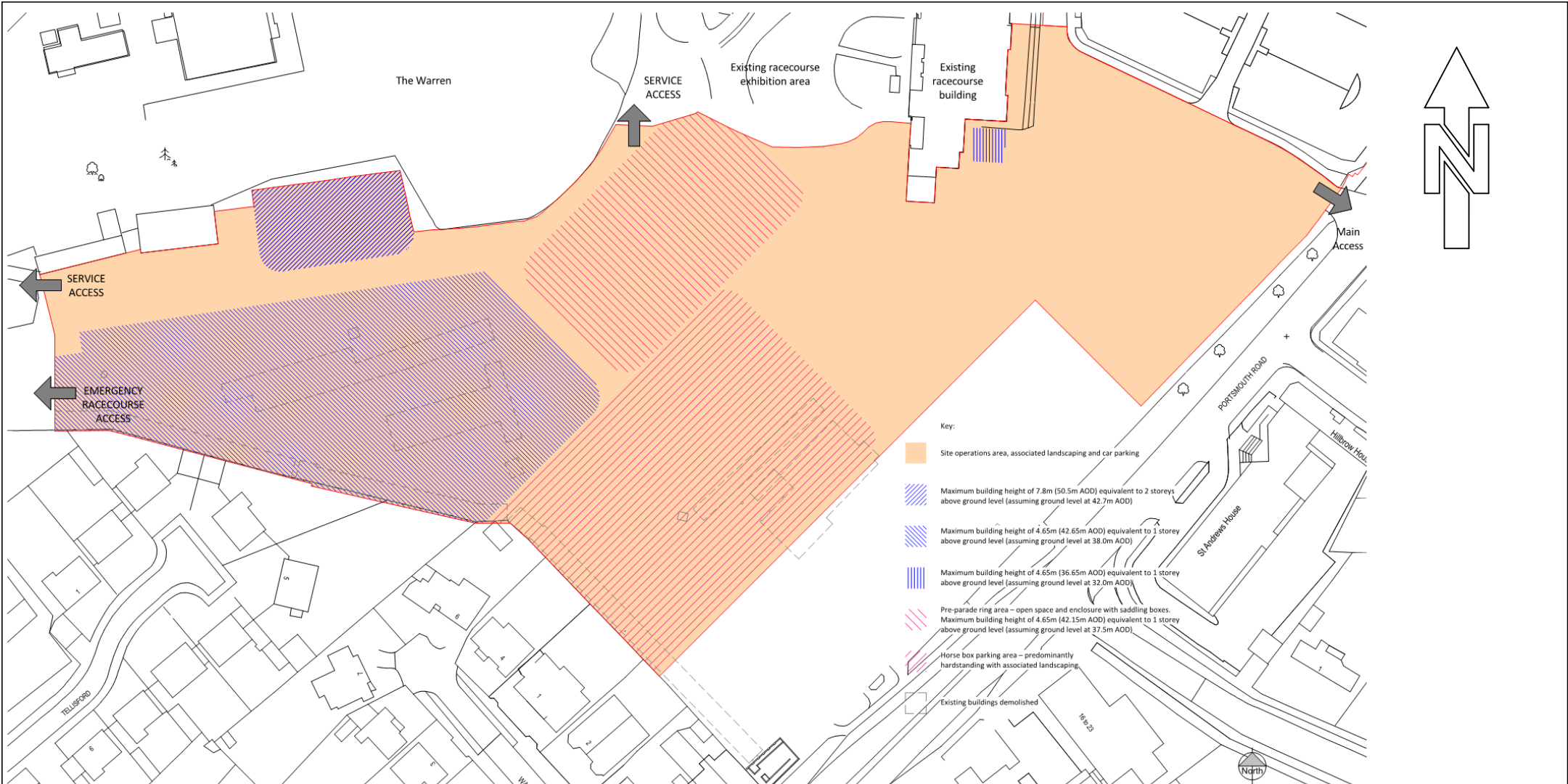
Scale: NTS Job No: 18.10.006 Drawn By: HC



	LISTERS GEO
	Geotechnical and Geoenvironmental Consultants

Listers Geotechnical Consultants Ltd www.listersgeotechnics.co.uk Tel: 01327 860060

Title:	Site 5 - Indicative Layout	
Site:	Sandown Park, Portsmouth Road, Esher, KT10 9AJ	
Scale: NTS	Job No: 18.10.006	Drawn By: HC



 LISTERS GEO Geotechnical and Geoenvironmental Consultants		
<small>Listers Geotechnical Consultants Ltd www.listersgeotechnics.co.uk Tel: 01327 860060</small>		
Title: Site A Parameter plan		
Site: Sandown Park, Portsmouth Road, Esher, KT10 9AJ		
Scale: NTS	Job No: 18.10.006	Drawn By: HC



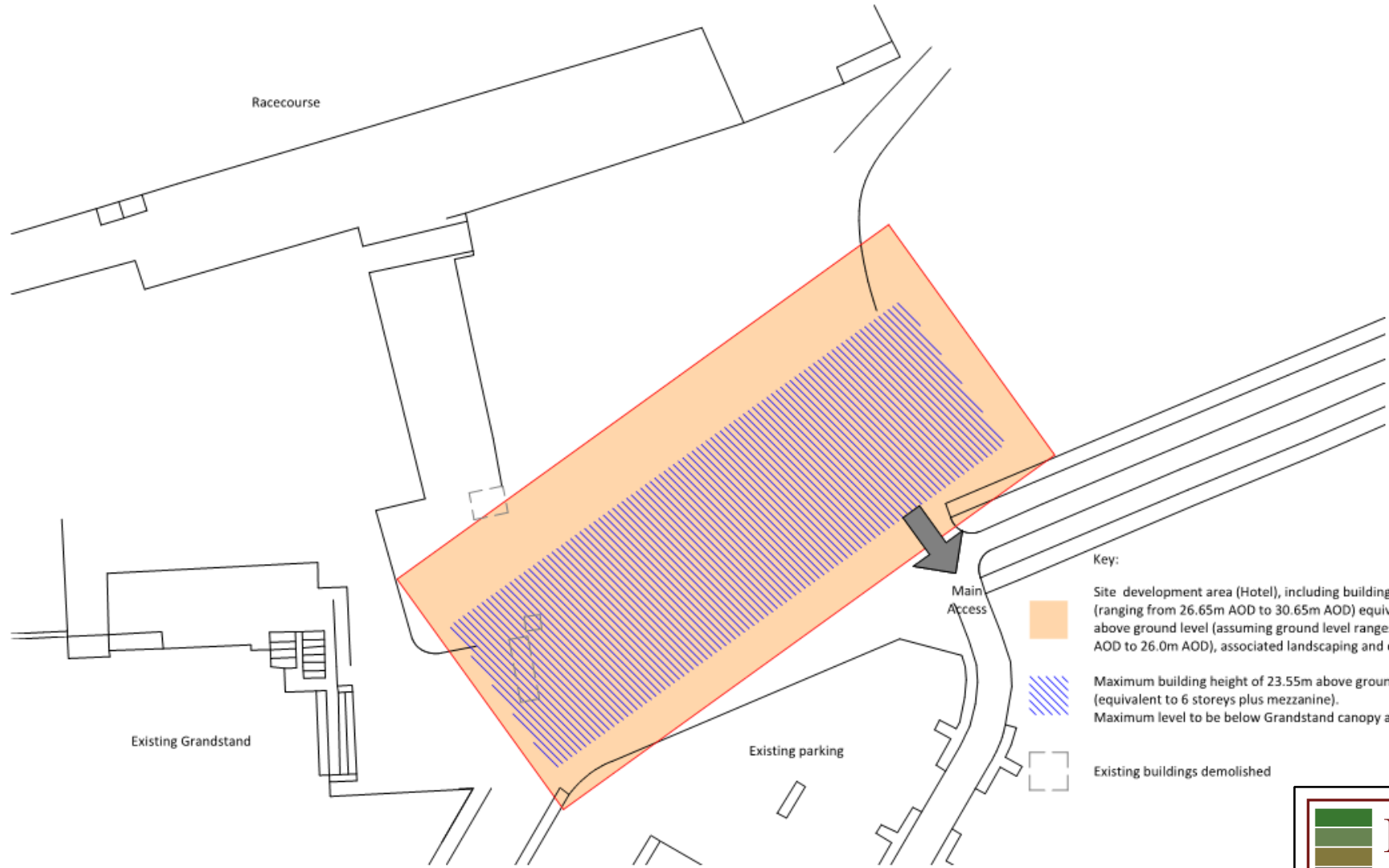
LISTERS GEO
 Geotechnical and Geoenvironmental Consultants

Listers Geotechnical Consultants Ltd www.listersgeotechnics.co.uk Tel: 01327 860060




Title: Site A - Indicative Layout

Site: Sandown Park, Portsmouth Road, Esher, KT10 9AJ

Scale: NTS Job No: 18.10.006 Drawn By: HC



Key:

-  Site development area (Hotel), including buildings up to 4.65m (ranging from 26.65m AOD to 30.65m AOD) equivalent to 1 storey above ground level (assuming ground level ranges from 22.0m AOD to 26.0m AOD), associated landscaping and car parking.
-  Maximum building height of 23.55m above ground level. (equivalent to 6 storeys plus mezzanine). Maximum level to be below Grandstand canopy at 47m AOD.
-  Existing buildings demolished

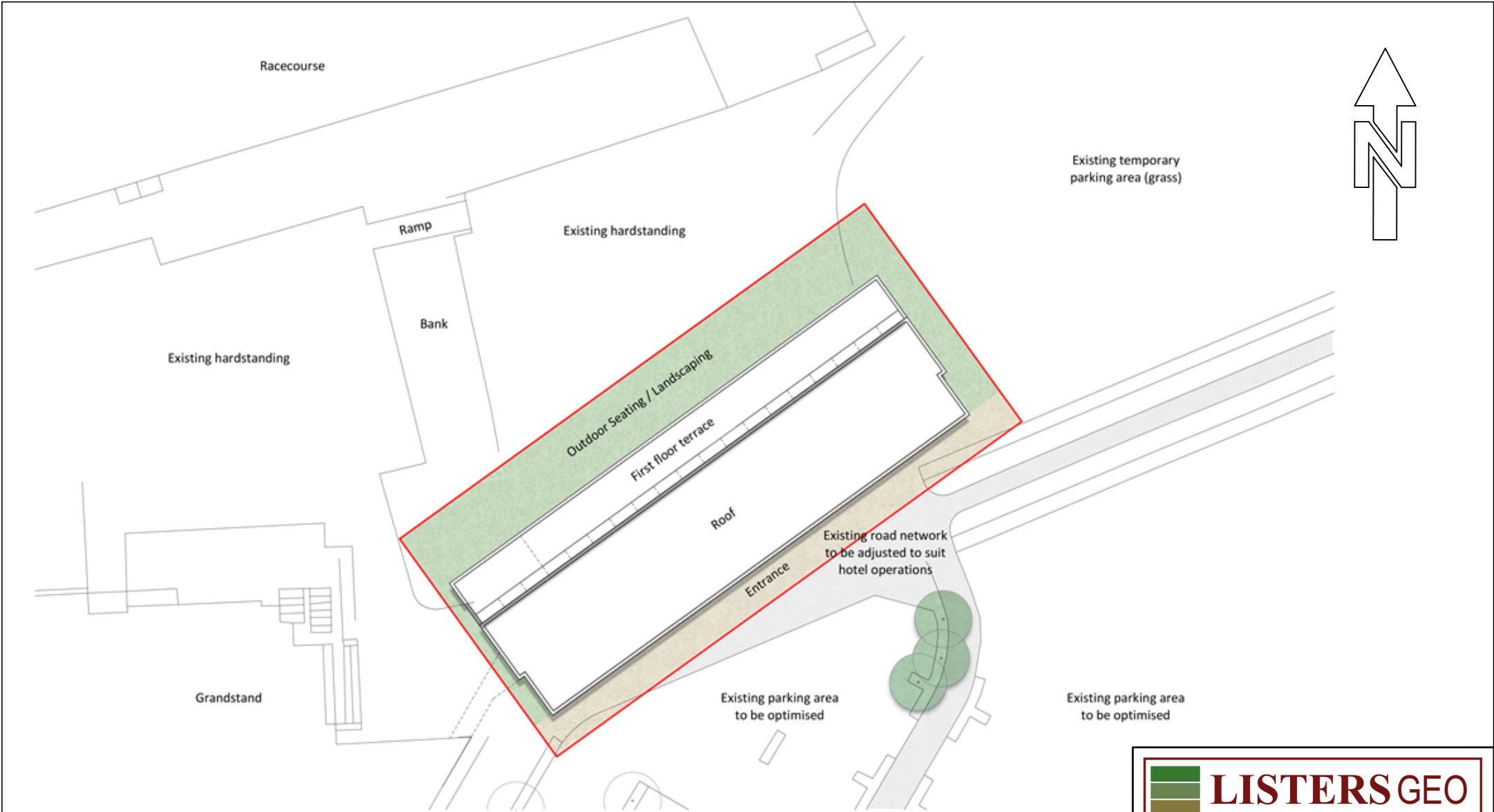
	LISTERS GEO Geotechnical and Geoenvironmental Consultants
---	---

Listers Geotechnical Consultants Ltd www.listersgeotechnics.co.uk Tel: 01327 860060

Title: Site B Parameter plan

Site: Sandown Park, Portsmouth Road, Esher, KT10 9AJ

Scale: NTS	Job No: 18.10.006	Drawn By: HC
------------	-------------------	--------------



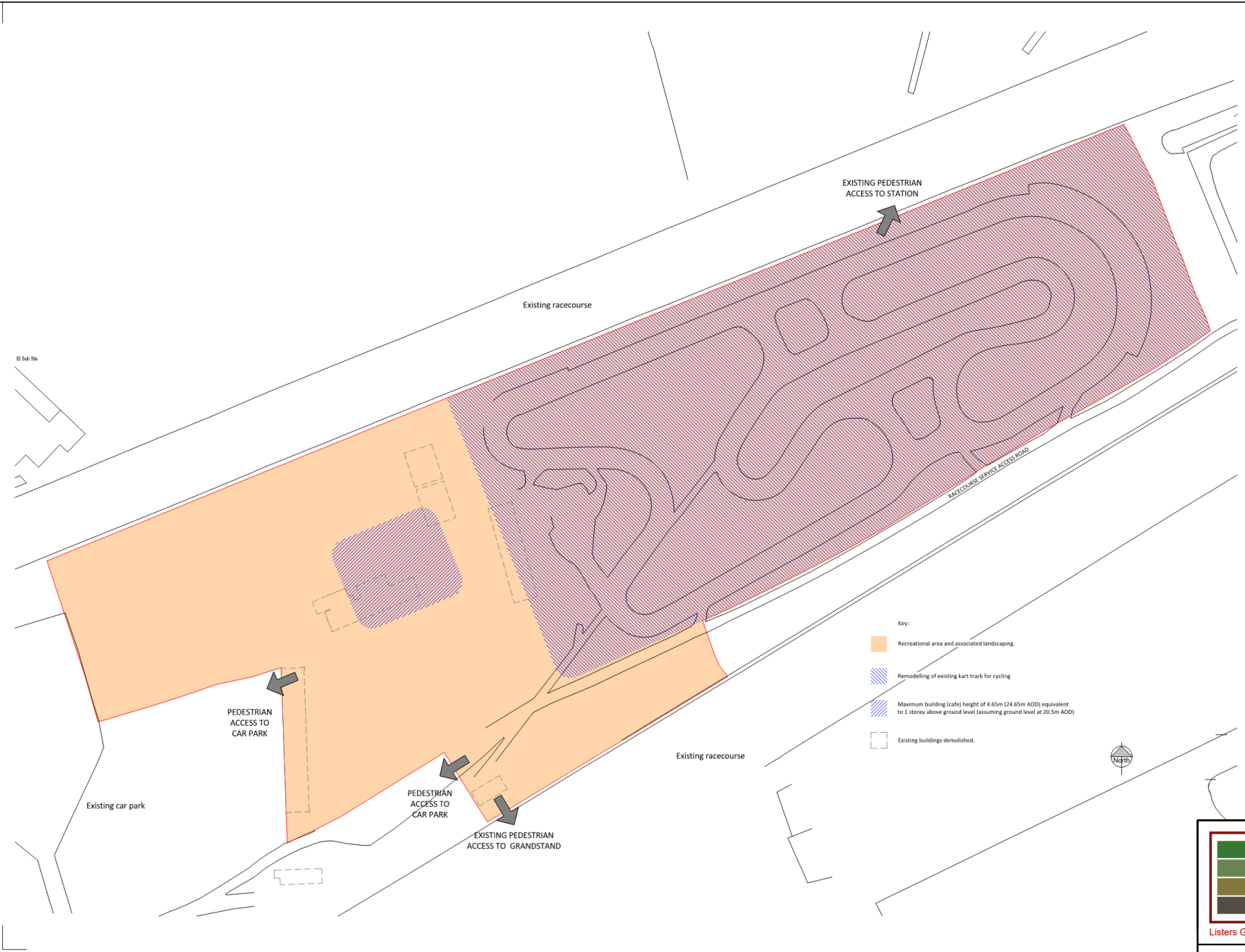

LISTERS GEO
Geotechnical and Geoenvironmental Consultants

Listers Geotechnical Consultants Ltd www.listersgeotechnics.co.uk Tel: 01327 860060

Title: Site B - Indicative Layout

Site: Sandown Park, Portsmouth Road, Esher, KT10 9AJ

Scale: NTS	Job No: 18.10.006	Drawn By: HC
------------	-------------------	--------------



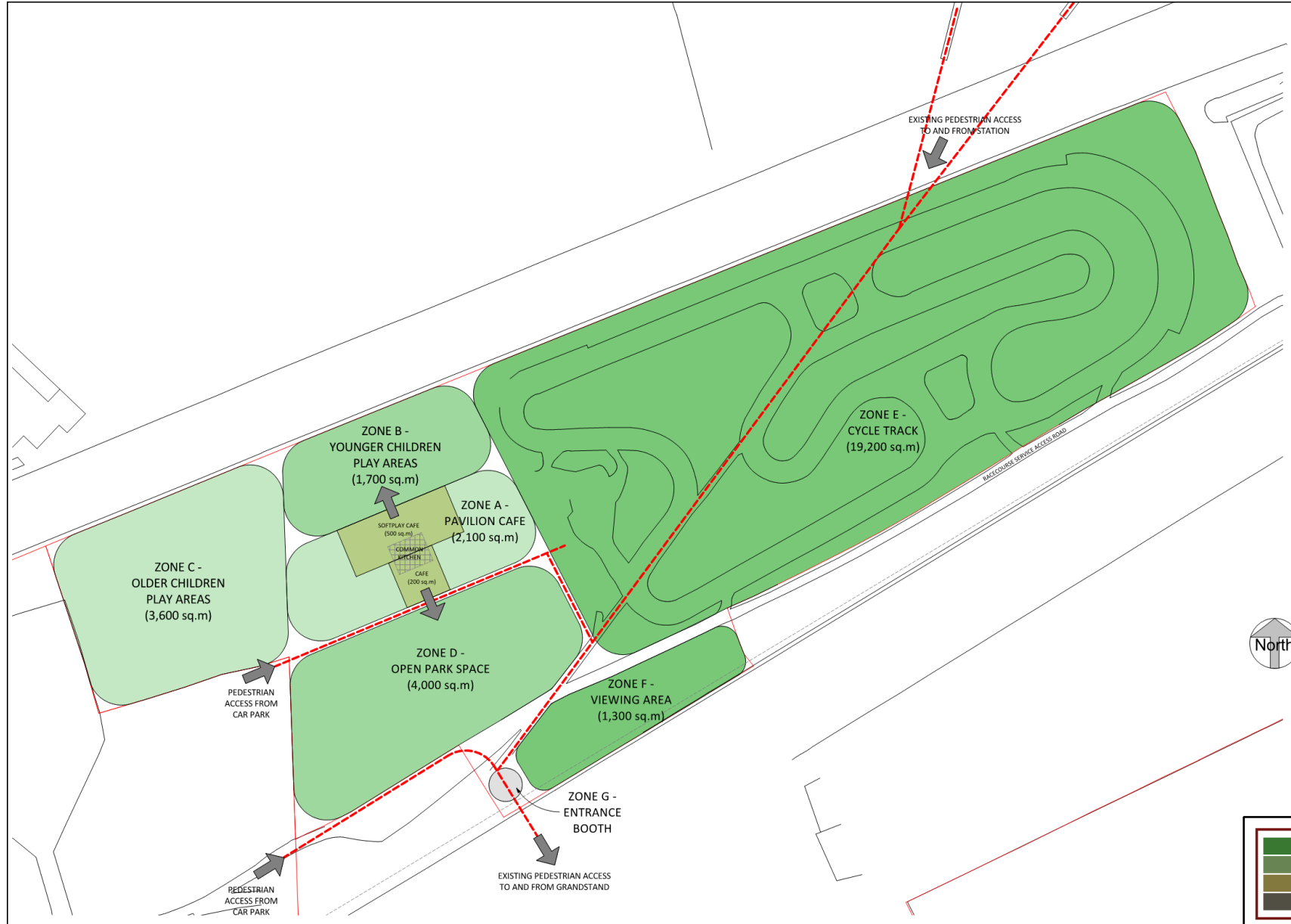
- Key:
- Recreational area and associated landscaping.
 - Remodelling of existing kart track for cycling
 - Maximum building (cafe) height of 4.65m (24.65m AOD) equivalent to 1 storey above ground level (assuming ground level at 20.5m AOD)
 - Existing buildings demolished.



	LISTERS GEO Geotechnical and Geoenvironmental Consultants
--	---

Listers Geotechnical Consultants Ltd www.listersgeotechnics.co.uk Tel: 01327 860060

Title: Site C Parameter plan		
Site: Sandown Park, Portsmouth Road, Esher, KT10 9AJ		
Scale: NTS	Job No: 18.10.006	Drawn By: HC



Scale 1:500

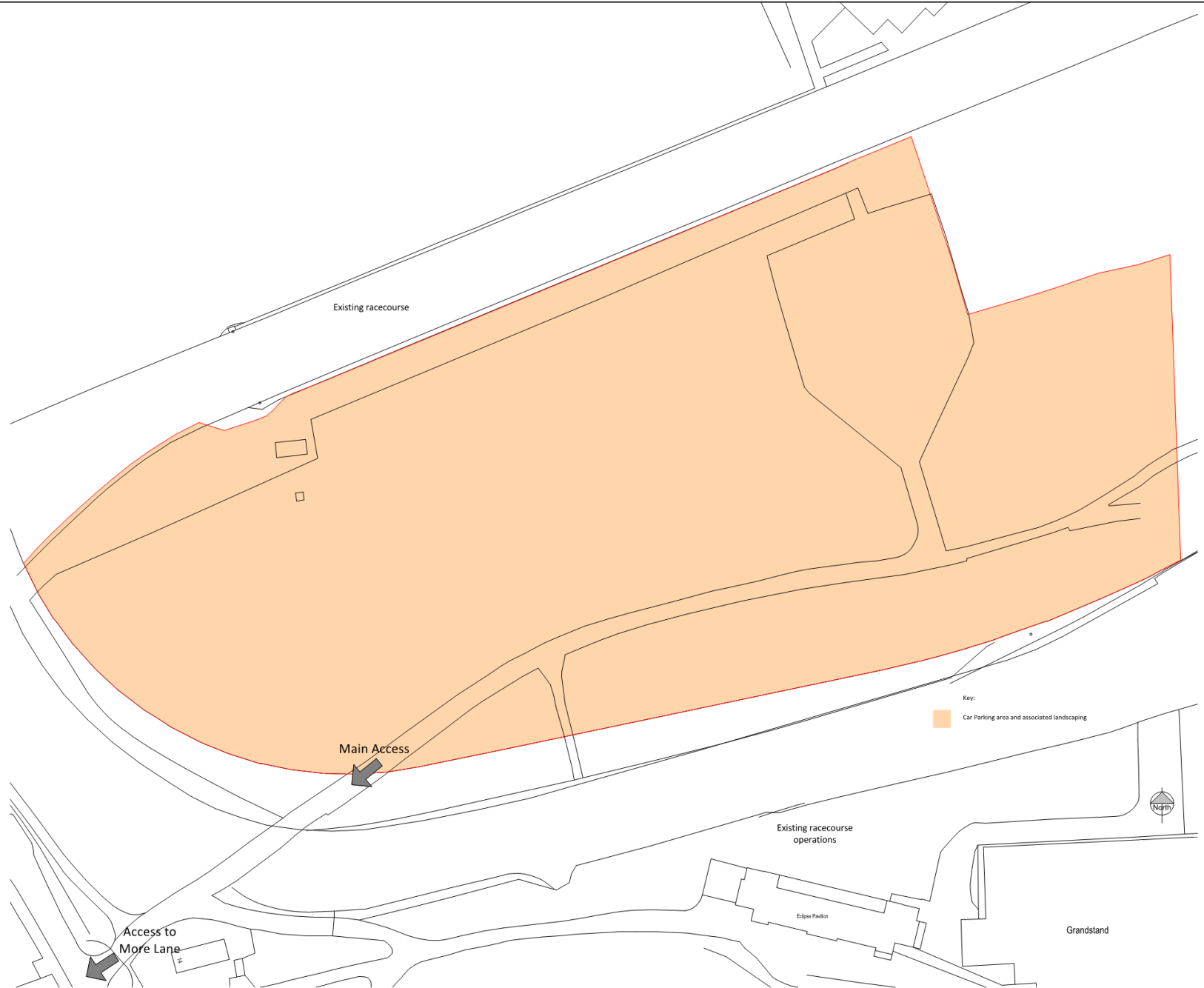
	LISTERS GEO Geotechnical and Geoenvironmental Consultants
---	---

Listers Geotechnical Consultants Ltd www.listersgeotechnics.co.uk Tel: 01327 860060

Title: Site C - Indicative Layout

Site: Sandown Park, Portsmouth Road, Esher, KT10 9AJ

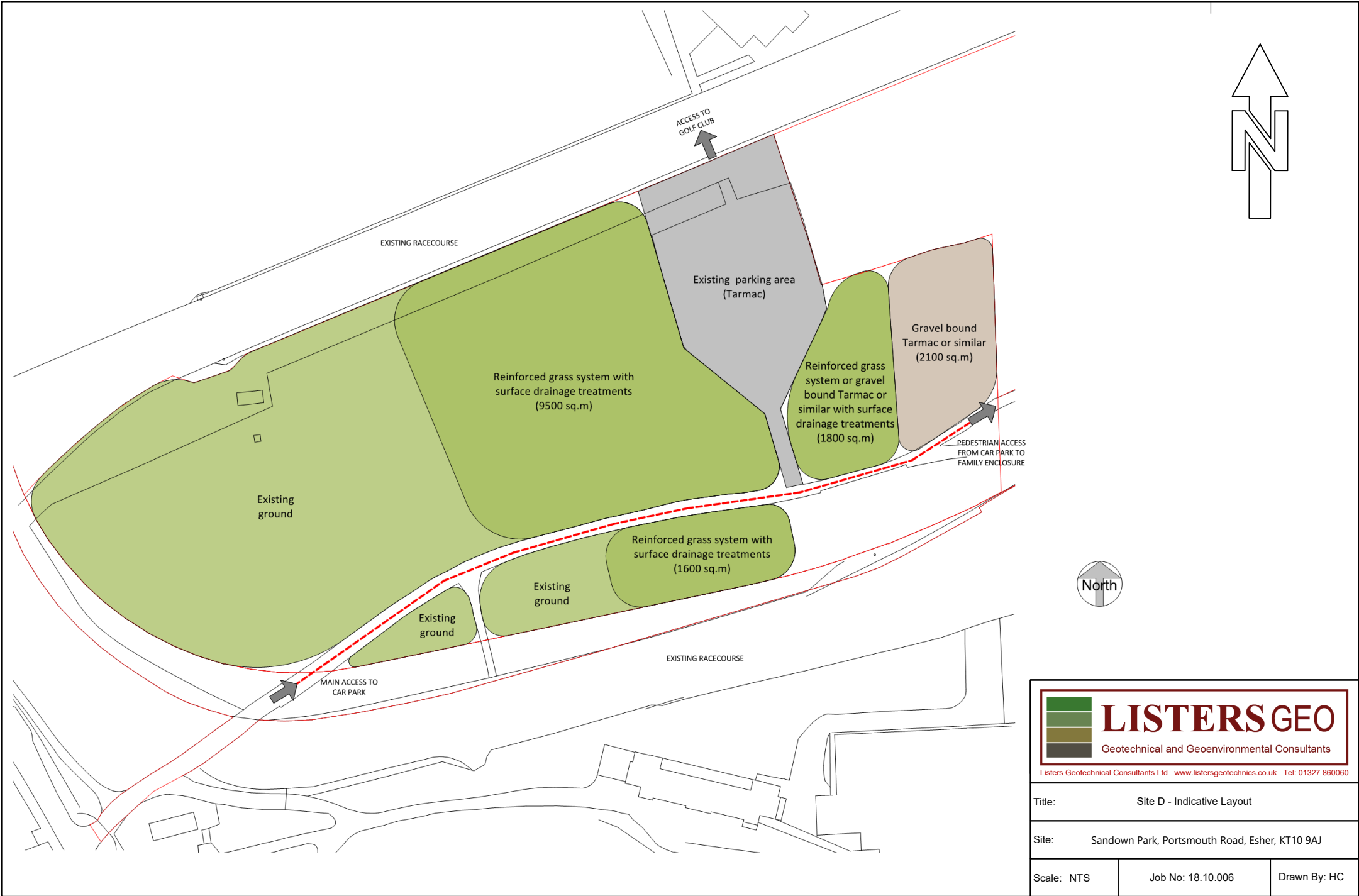
Scale: NTS	Job No: 18.10.006	Drawn By: HC
------------	-------------------	--------------



	LISTERS GEO Geotechnical and Geoenvironmental Consultants
---	---

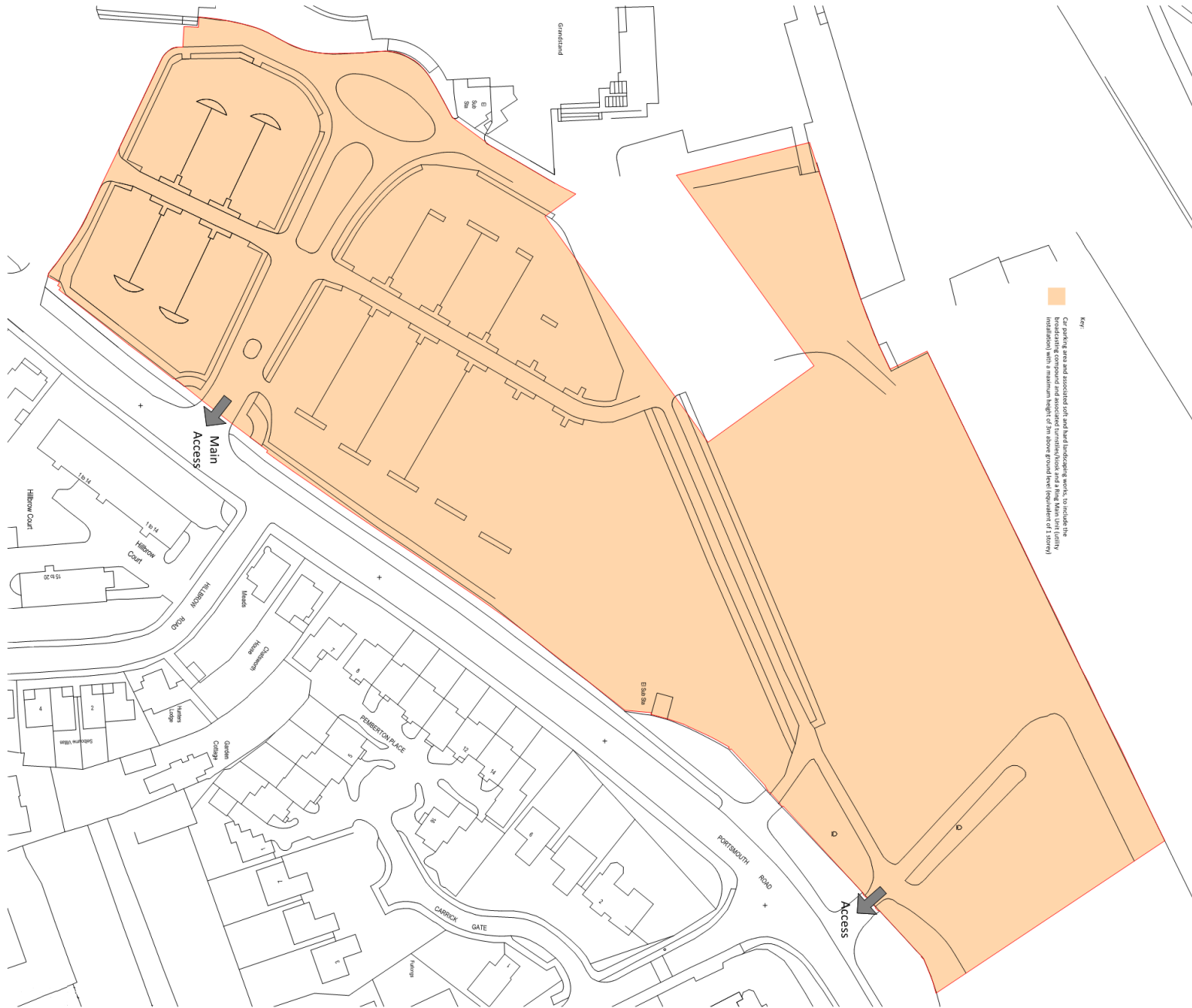
Listers Geotechnical Consultants Ltd www.listersgeotechnics.co.uk Tel: 01327 860060

Title: Site D Parameter plan		
Site: Sandown Park, Portsmouth Road, Esher, KT10 9AJ		
Scale: NTS	Job No: 18.10.006	Drawn By: HC

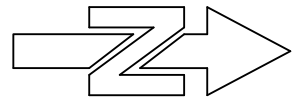


	<h1 style="margin: 0;">LISTERS GEO</h1> <p style="margin: 0;">Geotechnical and Geoenvironmental Consultants</p>
Listers Geotechnical Consultants Ltd www.listersgeotechnics.co.uk Tel: 01327 860060	

Title:	Site D - Indicative Layout
Site:	Sandown Park, Portsmouth Road, Esher, KT10 9AJ
Scale: NTS	Job No: 18.10.006
	Drawn By: HC



Key:
 Our parking area and associated soft and hard landscaping works, to include the
 broadcasting compound and associated furniture, and a flag Main Unit (utility
 installation with a maximum height of 10m above ground level (equivalent to 3 storeys))



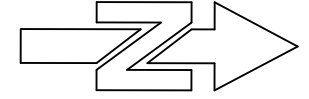
	LISTERS GEO
	Geotechnical and Geoenvironmental Consultants

Listers Geotechnical Consultants Ltd www.listersgeotechnics.co.uk Tel: 01327 860060

Title: Site F Parameter plan

Site: Sandown Park, Portsmouth Road, Esher, KT10 9AJ

Scale: NTS	Job No: 18.10.006	Drawn By: HC
------------	-------------------	--------------




 LISTERS GEO Geotechnical and Geoenvironmental Consultants		
<small>Listers Geotechnical Consultants Ltd www.listersgeotechnics.co.uk Tel: 01327 860060</small>		
Title:	Site F - Indicative Layout	
Site:	Sandown Park, Portsmouth Road, Esher, KT10 9AJ	
Scale: NTS	Job No: 18.10.006	Drawn By: HC



Photo 1 – Looking towards the west at Site 1 showing difference in ground level



Photo 2 – Stables at Site 1

SITE PHOTOGRAPHS

Report:
18.10.006



Photo 3 – Stables along south of Site 1 with possible cement bound asbestos roofing



Photo 4 - Storage unit at west end of Site 1

SITE PHOTOGRAPHS

Report:
18.10.006



Photo 5 - Storage yard to northeast of Site 1



Photo 6 – Storage yard to northeast of Site 1 showing flammable liquid storage container, plant machinery and rubber tyres

SITE PHOTOGRAPHS

Report:
18.10.006



Photo 7 – Bunded oil tank approximately 30m northeast of Site 1



Photo 8 – Gas canisters and oil drums approximately 30m northwest of Site 1

SITE PHOTOGRAPHS

Report:
18.10.006



Photo 9 – Maintenance workshop 40m northwest of Site 1



Photo 10 – Western end of Site 3

SITE PHOTOGRAPHS

Report:
18.10.006



Photo 11 – Stockpiles of sand and wood chipping in western corner of Site 3 with storage yard beyond



Photo 12 – Bunded oil tank in storage yard at western end of Site 3



Photo 13 – Another bunded oil tank in adjacent storage yard towards western end of Site 3



Photo 14 - Looking eastwards along Site 3 with housing on the left and parking on the right with racecourse beyond

SITE PHOTOGRAPHS

Report:
18.10.006



Photo 15 – Looking eastwards at Site 3 with racecourse to the right



Photo 16 – Access road at Site 3 leading towards Lower Green Road

SITE PHOTOGRAPHS

Report:
18.10.006



Photo 17 – Mature trees on the left towards eastern end of Site 3



Photo 18 – Composting area towards eastern end of Site 3



Photo 19 – Storage yard at eastern end of Site 3



Photo 20 – Oil drums, paint and flammable liquid storage container in storage yard at eastern end of Site 3



Photo 21 – Looking northwards at Site 4



Photo 22- Looking towards northwest at Site 4

SITE PHOTOGRAPHS

Report:
18.10.006



Photo 23 – Looking to west at Site 4 with pallets in and bins at western end



Photo 24 – Again looking to west at Site 4

SITE PHOTOGRAPHS

Report:
18.10.006



Photo 25 – Carpark at western end of Site 5



Photo 26 – Looking east at Site 5

SITE PHOTOGRAPHS

Report:
18.10.006



Photo 27 – Looking west at Site 5



Photo 28 – Looking towards children's nursery at eastern end of Site 5

SITE PHOTOGRAPHS

Report:
18.10.006



Photo 29 – Looking east across car park at Site 2



Photo 30 – Car park and two storey building at Site 2



Photo 31 – Looking towards west at Site 2



Photo 32 – western end of building at Site 2

SITE PHOTOGRAPHS

Report:
18.10.006



Photo 33 – Stables with possible cement bound asbestos roofing in west of Site 2



Photo 38 – Stables at Site 2



Photo 39 – Entrance to Karting track (Site C)



Photo 40 – Looking west from Karting track with Kart workshop in distance (Site C)



Photo 41 – Looking east at Karting track with old tyre storage on left



Photo 42 – Karting track

SITE PHOTOGRAPHS

Report:
18.10.006



Photo 43 – Possible generator (yellow) in northwestern corner of karting track



Photo 44 – Bunding around Karting Track



Photo 45 – Reservoir located few metres to east of Karting track



Photo 46 – Carparking and proposed hotel location (Site B)

SITE PHOTOGRAPHS

Report:
18.10.006



Photo 47 – Looking east at location of proposed hotel (Site B)



Photo 48 – West end of proposed hotel with Grandstand to right (Site B)

SITE PHOTOGRAPHS

Report:
18.10.006



APPENDIX B

DESK STUDY INFORMATION

Envirocheck[®] Report:

Datasheet

Order Details:

Order Number:

181972336_1_1

Customer Reference:

18.10.006

National Grid Reference:

514120, 165400

Slice:

A

Site Area (Ha):

64.62

Search Buffer (m):

500

Site Details:

The Jockey Club, Sandown Park
Portsmouth Road
ESHER
KT10 9AJ

Client Details:

Mr M Johnston
Listers Geotechnical Consultants Ltd
Slapton Hill Barn
Blakesley Road
Slapton
Nr Towcester
Northants
NN12 8QD

Report Section	Page Number
Summary	-
Agency & Hydrological	1
Waste	17
Hazardous Substances	-
Geological	19
Industrial Land Use	23
Sensitive Land Use	30
Data Currency	31
Data Suppliers	36
Useful Contacts	37

Introduction

The Environment Act 1995 has made site sensitivity a key issue, as the legislation pays as much attention to the pathways by which contamination could spread, and to the vulnerable targets of contamination, as it does the potential sources of contamination. For this reason, Landmark's Site Sensitivity maps and Datasheet(s) place great emphasis on statutory data provided by the Environment Agency/Natural Resources Wales and the Scottish Environment Protection Agency; it also incorporates data from Natural England (and the Scottish and Welsh equivalents) and Local Authorities; and highlights hydrogeological features required by environmental and geotechnical consultants. It does not include any information concerning past uses of land. The datasheet is produced by querying the Landmark database to a distance defined by the client from a site boundary provided by the client. In this datasheet the National Grid References (NGRs) are rounded to the nearest 10m in accordance with Landmark's agreements with a number of Data Suppliers.

Copyright Notice

© Landmark Information Group Limited 2018. The Copyright on the information and data and its format as contained in this Envirocheck® Report ("Report") is the property of Landmark Information Group Limited ("Landmark") and several other Data Providers, including (but not limited to) Ordnance Survey, British Geological Survey, the Environment Agency/Natural Resources Wales and Natural England, and must not be reproduced in whole or in part by photocopying or any other method. The Report is supplied under Landmark's Terms and Conditions accepted by the Customer. A copy of Landmark's Terms and Conditions can be found with the Index Map for this report. Additional copies of the Report may be obtained from Landmark, subject to Landmark's charges in force from time to time. The Copyright, design rights and any other intellectual rights shall remain the exclusive property of Landmark and /or other Data providers, whose Copyright material has been included in this Report. © Environment Agency & United Kingdom Research and Innovation 2018. © Natural Resources Wales & United Kingdom Research and Innovation 2018.

Natural England Copyright Notice

Site of Special Scientific Interest, National Nature Reserve, Ramsar, Special Protection Area, Special Conservation Area, Marine Nature Reserve data (derived from Ordnance Survey 1:10000 raster) is provided by, and used with the permission of, Natural England who retain the copyright and Intellectual Property Rights for the data.

Scottish Natural Heritage Copyright

Contains SNH information licensed under the Open Government Licence v3.0.

Ove Arup Copyright Notice

The Mining Instability data was obtained on licence from Ove Arup & Partners Limited (for further information, contact mining.review@arup.com). No reproduction or further use of such Data is to be made without the prior written consent of Ove Arup & Partners Limited. The supplied Mining Instability data is derived from publicly available records and other third party sources and neither Ove Arup & Partners nor Landmark warrant the accuracy or completeness of such information or data.

Peter Brett Associates Copyright Notice

The cavity data presented has been extracted from the PBA enhanced version of the original DEFRA national cavity databases. PBA/DEFRA retain the copyright & intellectual property rights in the data. Whilst all reasonable efforts are made to check that the information contained in the cavity databases is accurate we do not warrant that the data is complete or error free. The information is based upon our own researches and those collated from a number of external sources and is continually being augmented and updated by PBA. In no event shall PBA/DEFRA or Landmark be liable for any loss or damage including, without limitation, indirect or consequential loss or damage arising from the use of this data.

Radon Potential dataset Copyright Notice

Information supplied from a joint dataset compiled by The British Geological Survey and Public Health England.

Natural Resources Wales Copyright Notice

Contains Natural Resources Wales information © Natural Resources Wales and Database Right. All rights Reserved. Contains Ordnance Survey Data. Ordnance Survey Licence number 100019741. Crown Copyright and Database Right. Contains Natural Resources Wales information © Natural Resources Wales and Database Right. All rights Reserved. Some features of this information are based on digital spatial data licensed from the Centre for Ecology & Hydrology © NERC (CEH). Defra, Met Office and DARD Rivers Agency © Crown copyright. © Cranfield University. © James Hutton Institute. Contains OS data © Crown copyright and database right 2018. Land & Property Services © Crown copyright and database right.

Report Version v53.0

Data Type	Page Number	On Site	0 to 250m	251 to 500m (*up to 1000m)
Agency & Hydrological				
BGS Groundwater Flooding Susceptibility	pg 1	Yes	Yes	Yes
Contaminated Land Register Entries and Notices				
Discharge Consents	pg 4			1
Prosecutions Relating to Controlled Waters			n/a	n/a
Enforcement and Prohibition Notices				
Integrated Pollution Controls				
Integrated Pollution Prevention And Control				
Local Authority Integrated Pollution Prevention And Control				
Local Authority Pollution Prevention and Controls	pg 5			3
Local Authority Pollution Prevention and Control Enforcements				
Nearest Surface Water Feature		Yes		
Pollution Incidents to Controlled Waters	pg 5			1
Prosecutions Relating to Authorised Processes	pg 5		1	
Registered Radioactive Substances				
River Quality	pg 5			1
River Quality Biology Sampling Points				
River Quality Chemistry Sampling Points				
Substantiated Pollution Incident Register				
Water Abstractions	pg 6		1	(*2)
Water Industry Act Referrals				
Groundwater Vulnerability	pg 6	Yes	n/a	n/a
Drift Deposits			n/a	n/a
Bedrock Aquifer Designations	pg 6	Yes	n/a	n/a
Superficial Aquifer Designations	pg 7	Yes	n/a	n/a
Source Protection Zones				
Extreme Flooding from Rivers or Sea without Defences	pg 7	Yes	Yes	n/a
Flooding from Rivers or Sea without Defences	pg 7		Yes	n/a
Areas Benefiting from Flood Defences				n/a
Flood Water Storage Areas				n/a
Flood Defences				n/a
OS Water Network Lines	pg 7	4	30	47

Data Type	Page Number	On Site	0 to 250m	251 to 500m (*up to 1000m)
Waste				
BGS Recorded Landfill Sites				
Historical Landfill Sites	pg 17		1	
Integrated Pollution Control Registered Waste Sites				
Licensed Waste Management Facilities (Landfill Boundaries)				
Licensed Waste Management Facilities (Locations)	pg 17			1
Local Authority Landfill Coverage	pg 17	2	n/a	n/a
Local Authority Recorded Landfill Sites	pg 17		1	
Potentially Infilled Land (Non-Water)				
Potentially Infilled Land (Water)	pg 17			10
Registered Landfill Sites				
Registered Waste Transfer Sites	pg 18			1
Registered Waste Treatment or Disposal Sites				
Hazardous Substances				
Control of Major Accident Hazards Sites (COMAH)				
Explosive Sites				
Notification of Installations Handling Hazardous Substances (NIHHS)				
Planning Hazardous Substance Consents				
Planning Hazardous Substance Enforcements				

Data Type	Page Number	On Site	0 to 250m	251 to 500m (*up to 1000m)
Geological				
BGS 1:625,000 Solid Geology	pg 19	Yes	n/a	n/a
BGS Estimated Soil Chemistry	pg 19	Yes	Yes	Yes
BGS Recorded Mineral Sites				
BGS Urban Soil Chemistry				
BGS Urban Soil Chemistry Averages				
CBSCB Compensation District			n/a	n/a
Coal Mining Affected Areas			n/a	n/a
Mining Instability	pg 20	Yes	n/a	n/a
Man-Made Mining Cavities	pg 20	1	1	
Natural Cavities				
Non Coal Mining Areas of Great Britain	pg 20		Yes	n/a
Potential for Collapsible Ground Stability Hazards	pg 20	Yes		n/a
Potential for Compressible Ground Stability Hazards	pg 20	Yes	Yes	n/a
Potential for Ground Dissolution Stability Hazards				n/a
Potential for Landslide Ground Stability Hazards	pg 21	Yes		n/a
Potential for Running Sand Ground Stability Hazards	pg 21	Yes	Yes	n/a
Potential for Shrinking or Swelling Clay Ground Stability Hazards	pg 22	Yes	Yes	n/a
Radon Potential - Radon Affected Areas			n/a	n/a
Radon Potential - Radon Protection Measures			n/a	n/a
Industrial Land Use				
Contemporary Trade Directory Entries	pg 23	1	24	25
Fuel Station Entries	pg 27		1	1
Points of Interest - Commercial Services	pg 27		1	8
Points of Interest - Education and Health				
Points of Interest - Manufacturing and Production	pg 28		2	6
Points of Interest - Public Infrastructure	pg 28		2	1
Points of Interest - Recreational and Environmental	pg 29	2		3
Gas Pipelines				
Underground Electrical Cables				

Data Type	Page Number	On Site	0 to 250m	251 to 500m (*up to 1000m)
Sensitive Land Use				
Ancient Woodland	pg 30	1		
Areas of Adopted Green Belt	pg 30	1		
Areas of Unadopted Green Belt				
Areas of Outstanding Natural Beauty				
Environmentally Sensitive Areas				
Forest Parks				
Local Nature Reserves				
Marine Nature Reserves				
National Nature Reserves				
National Parks				
Nitrate Sensitive Areas				
Nitrate Vulnerable Zones	pg 30	1		
Ramsar Sites				
Sites of Special Scientific Interest				
Special Areas of Conservation				
Special Protection Areas				
World Heritage Sites				

Map ID	Details	Quadrant Reference (Compass Direction)	Estimated Distance From Site	Contact	NGR
	BGS Groundwater Flooding Susceptibility Flooding Type: Limited Potential for Groundwater Flooding to Occur	A10SE (N)	0	1	514123 165400
	BGS Groundwater Flooding Susceptibility Flooding Type: Potential for Groundwater Flooding to Occur at Surface	A10SE (W)	0	1	513850 165397
	BGS Groundwater Flooding Susceptibility Flooding Type: Potential for Groundwater Flooding of Property Situated Below Ground Level	A10SW (NW)	0	1	513650 165600
	BGS Groundwater Flooding Susceptibility Flooding Type: Potential for Groundwater Flooding of Property Situated Below Ground Level	A10SW (W)	0	1	513750 165500
	BGS Groundwater Flooding Susceptibility Flooding Type: Potential for Groundwater Flooding of Property Situated Below Ground Level	A10SE (W)	0	1	513950 165400
	BGS Groundwater Flooding Susceptibility Flooding Type: Potential for Groundwater Flooding of Property Situated Below Ground Level	A10SE (W)	0	1	514000 165397
	BGS Groundwater Flooding Susceptibility Flooding Type: Limited Potential for Groundwater Flooding to Occur	A6NE (SW)	0	1	514000 165250
	BGS Groundwater Flooding Susceptibility Flooding Type: Potential for Groundwater Flooding to Occur at Surface	A10SE (N)	0	1	514150 165550
	BGS Groundwater Flooding Susceptibility Flooding Type: Potential for Groundwater Flooding to Occur at Surface	A10SW (W)	0	1	513600 165550
	BGS Groundwater Flooding Susceptibility Flooding Type: Potential for Groundwater Flooding to Occur at Surface	A10SW (W)	0	1	513650 165550
	BGS Groundwater Flooding Susceptibility Flooding Type: Limited Potential for Groundwater Flooding to Occur	A10SE (NW)	0	1	513950 165550
	BGS Groundwater Flooding Susceptibility Flooding Type: Potential for Groundwater Flooding of Property Situated Below Ground Level	A6NW (SW)	0	1	513700 165150
	BGS Groundwater Flooding Susceptibility Flooding Type: Potential for Groundwater Flooding of Property Situated Below Ground Level	A6NW (SW)	0	1	513750 165150
	BGS Groundwater Flooding Susceptibility Flooding Type: Limited Potential for Groundwater Flooding to Occur	A6NW (SW)	0	1	513800 165150
	BGS Groundwater Flooding Susceptibility Flooding Type: Limited Potential for Groundwater Flooding to Occur	A10SE (SE)	0	1	514123 165397
	BGS Groundwater Flooding Susceptibility Flooding Type: Limited Potential for Groundwater Flooding to Occur	A11SW (E)	0	1	514450 165350
	BGS Groundwater Flooding Susceptibility Flooding Type: Limited Potential for Groundwater Flooding to Occur	A6NE (S)	0	1	514123 165000
	BGS Groundwater Flooding Susceptibility Flooding Type: Potential for Groundwater Flooding of Property Situated Below Ground Level	A11NE (NE)	3	1	514500 165800
	BGS Groundwater Flooding Susceptibility Flooding Type: Limited Potential for Groundwater Flooding to Occur	A6NW (SW)	14	1	513700 165100
	BGS Groundwater Flooding Susceptibility Flooding Type: Potential for Groundwater Flooding of Property Situated Below Ground Level	A10NE (N)	19	1	514100 165750
	BGS Groundwater Flooding Susceptibility Flooding Type: Potential for Groundwater Flooding of Property Situated Below Ground Level	A11SE (E)	29	1	514750 165500
	BGS Groundwater Flooding Susceptibility Flooding Type: Potential for Groundwater Flooding of Property Situated Below Ground Level	A10NE (N)	31	1	514050 165750

Map ID	Details	Quadrant Reference (Compass Direction)	Estimated Distance From Site	Contact	NGR
	BGS Groundwater Flooding Susceptibility Flooding Type: Potential for Groundwater Flooding of Property Situated Below Ground Level	A6NW (SW)	33	1	513650 165150
	BGS Groundwater Flooding Susceptibility Flooding Type: Limited Potential for Groundwater Flooding to Occur	A11SE (E)	42	1	514550 165350
	BGS Groundwater Flooding Susceptibility Flooding Type: Potential for Groundwater Flooding of Property Situated Below Ground Level	A11SE (E)	44	1	514550 165397
	BGS Groundwater Flooding Susceptibility Flooding Type: Potential for Groundwater Flooding of Property Situated Below Ground Level	A11SE (E)	45	1	514550 165400
	BGS Groundwater Flooding Susceptibility Flooding Type: Potential for Groundwater Flooding of Property Situated Below Ground Level	A10SW (NW)	53	1	513550 165650
	BGS Groundwater Flooding Susceptibility Flooding Type: Limited Potential for Groundwater Flooding to Occur	A7NE (E)	55	1	514550 165300
	BGS Groundwater Flooding Susceptibility Flooding Type: Potential for Groundwater Flooding of Property Situated Below Ground Level	A10NE (NW)	57	1	513950 165750
	BGS Groundwater Flooding Susceptibility Flooding Type: Potential for Groundwater Flooding of Property Situated Below Ground Level	A11SE (E)	71	1	514750 165450
	BGS Groundwater Flooding Susceptibility Flooding Type: Limited Potential for Groundwater Flooding to Occur	A11SE (E)	93	1	514600 165397
	BGS Groundwater Flooding Susceptibility Flooding Type: Potential for Groundwater Flooding of Property Situated Below Ground Level	A10NW (NW)	93	1	513750 165750
	BGS Groundwater Flooding Susceptibility Flooding Type: Potential for Groundwater Flooding of Property Situated Below Ground Level	A10NW (NW)	124	1	513500 165700
	BGS Groundwater Flooding Susceptibility Flooding Type: Limited Potential for Groundwater Flooding to Occur	A7NW (SE)	166	1	514400 165000
	BGS Groundwater Flooding Susceptibility Flooding Type: Potential for Groundwater Flooding of Property Situated Below Ground Level	A6NW (W)	167	1	513500 165150
	BGS Groundwater Flooding Susceptibility Flooding Type: Potential for Groundwater Flooding of Property Situated Below Ground Level	A12SW (E)	175	1	514900 165500
	BGS Groundwater Flooding Susceptibility Flooding Type: Limited Potential for Groundwater Flooding to Occur	A6NW (SW)	189	1	513500 165100
	BGS Groundwater Flooding Susceptibility Flooding Type: Potential for Groundwater Flooding of Property Situated Below Ground Level	A10NW (NW)	191	1	513550 165800
	BGS Groundwater Flooding Susceptibility Flooding Type: Limited Potential for Groundwater Flooding to Occur	A7NE (SE)	196	1	514600 165150
	BGS Groundwater Flooding Susceptibility Flooding Type: Potential for Groundwater Flooding to Occur at Surface	A10NE (N)	201	1	513950 165900
	BGS Groundwater Flooding Susceptibility Flooding Type: Potential for Groundwater Flooding of Property Situated Below Ground Level	A12NW (NE)	229	1	514900 165850
	BGS Groundwater Flooding Susceptibility Flooding Type: Potential for Groundwater Flooding to Occur at Surface	A10NW (NW)	230	1	513600 165850
	BGS Groundwater Flooding Susceptibility Flooding Type: Potential for Groundwater Flooding of Property Situated Below Ground Level	A5NE (SW)	234	1	513450 165100
	BGS Groundwater Flooding Susceptibility Flooding Type: Potential for Groundwater Flooding to Occur at Surface	A10NE (N)	249	1	513950 165950

Map ID	Details	Quadrant Reference (Compass Direction)	Estimated Distance From Site	Contact	NGR
	BGS Groundwater Flooding Susceptibility Flooding Type: Potential for Groundwater Flooding of Property Situated Below Ground Level	A9NE (W)	253	1	513350 165700
	BGS Groundwater Flooding Susceptibility Flooding Type: Limited Potential for Groundwater Flooding to Occur	A12SW (E)	253	1	514950 165400
	BGS Groundwater Flooding Susceptibility Flooding Type: Potential for Groundwater Flooding of Property Situated Below Ground Level	A7NE (SE)	267	1	514650 165100
	BGS Groundwater Flooding Susceptibility Flooding Type: Potential for Groundwater Flooding of Property Situated Below Ground Level	A12SW (E)	274	1	515000 165550
	BGS Groundwater Flooding Susceptibility Flooding Type: Potential for Groundwater Flooding of Property Situated Below Ground Level	A12SW (E)	274	1	515000 165500
	BGS Groundwater Flooding Susceptibility Flooding Type: Potential for Groundwater Flooding to Occur at Surface	A12SW (E)	276	1	515000 165600
	BGS Groundwater Flooding Susceptibility Flooding Type: Potential for Groundwater Flooding of Property Situated Below Ground Level	A12NW (NE)	277	1	514950 165850
	BGS Groundwater Flooding Susceptibility Flooding Type: Limited Potential for Groundwater Flooding to Occur	A12SW (E)	282	1	515000 165397
	BGS Groundwater Flooding Susceptibility Flooding Type: Potential for Groundwater Flooding to Occur at Surface	A9SE (W)	289	1	513300 165650
	BGS Groundwater Flooding Susceptibility Flooding Type: Potential for Groundwater Flooding of Property Situated Below Ground Level	A9NE (W)	301	1	513300 165700
	BGS Groundwater Flooding Susceptibility Flooding Type: Potential for Groundwater Flooding of Property Situated Below Ground Level	A7NE (SE)	303	1	514650 165050
	BGS Groundwater Flooding Susceptibility Flooding Type: Limited Potential for Groundwater Flooding to Occur	A3NW (S)	322	1	514250 164600
	BGS Groundwater Flooding Susceptibility Flooding Type: Potential for Groundwater Flooding of Property Situated Below Ground Level	A12NW (NE)	325	1	515000 165850
	BGS Groundwater Flooding Susceptibility Flooding Type: Potential for Groundwater Flooding to Occur at Surface	A9SE (W)	332	1	513250 165600
	BGS Groundwater Flooding Susceptibility Flooding Type: Potential for Groundwater Flooding of Property Situated Below Ground Level	A7NE (SE)	338	1	514700 165050
	BGS Groundwater Flooding Susceptibility Flooding Type: Potential for Groundwater Flooding of Property Situated Below Ground Level	A7NE (SE)	340	1	514650 165000
	BGS Groundwater Flooding Susceptibility Flooding Type: Potential for Groundwater Flooding of Property Situated Below Ground Level	A5NE (W)	356	1	513300 165150
	BGS Groundwater Flooding Susceptibility Flooding Type: Limited Potential for Groundwater Flooding to Occur	A8NW (E)	383	1	515000 165300
	BGS Groundwater Flooding Susceptibility Flooding Type: Potential for Groundwater Flooding to Occur at Surface	A9NE (W)	397	1	513200 165700
	BGS Groundwater Flooding Susceptibility Flooding Type: Potential for Groundwater Flooding of Property Situated Below Ground Level	A5NE (W)	398	1	513250 165200
	BGS Groundwater Flooding Susceptibility Flooding Type: Potential for Groundwater Flooding of Property Situated Below Ground Level	A5NE (W)	405	1	513250 165150
	BGS Groundwater Flooding Susceptibility Flooding Type: Potential for Groundwater Flooding of Property Situated Below Ground Level	A7NE (SE)	409	1	514750 165000

Map ID	Details	Quadrant Reference (Compass Direction)	Estimated Distance From Site	Contact	NGR
	BGS Groundwater Flooding Susceptibility Flooding Type: Potential for Groundwater Flooding of Property Situated Below Ground Level	A12SW (E)	410	1	515100 165397
	BGS Groundwater Flooding Susceptibility Flooding Type: Potential for Groundwater Flooding to Occur at Surface	A9NE (W)	411	1	513200 165750
	BGS Groundwater Flooding Susceptibility Flooding Type: Limited Potential for Groundwater Flooding to Occur	A5NE (W)	417	1	513250 165100
	BGS Groundwater Flooding Susceptibility Flooding Type: Potential for Groundwater Flooding to Occur at Surface	A14SW (NW)	420	1	513600 166050
	BGS Groundwater Flooding Susceptibility Flooding Type: Potential for Groundwater Flooding of Property Situated Below Ground Level	A12NW (NE)	423	1	515100 165850
	BGS Groundwater Flooding Susceptibility Flooding Type: Potential for Groundwater Flooding of Property Situated Below Ground Level	A9SE (W)	432	1	513150 165397
	BGS Groundwater Flooding Susceptibility Flooding Type: Potential for Groundwater Flooding of Property Situated Below Ground Level	A5NE (W)	433	1	513200 165300
	BGS Groundwater Flooding Susceptibility Flooding Type: Potential for Groundwater Flooding to Occur at Surface	A9SE (W)	436	1	513150 165650
	BGS Groundwater Flooding Susceptibility Flooding Type: Limited Potential for Groundwater Flooding to Occur	A7NE (SE)	444	1	514800 165000
	BGS Groundwater Flooding Susceptibility Flooding Type: Potential for Groundwater Flooding of Property Situated Below Ground Level	A9NE (W)	446	1	513150 165700
	BGS Groundwater Flooding Susceptibility Flooding Type: Potential for Groundwater Flooding of Property Situated Below Ground Level	A5NE (W)	447	1	513200 165200
	BGS Groundwater Flooding Susceptibility Flooding Type: Limited Potential for Groundwater Flooding to Occur	A5NE (W)	454	1	513200 165150
	BGS Groundwater Flooding Susceptibility Flooding Type: Limited Potential for Groundwater Flooding to Occur	A1NE (SW)	471	1	513450 164600
	BGS Groundwater Flooding Susceptibility Flooding Type: Potential for Groundwater Flooding to Occur at Surface	A9NE (W)	476	1	513150 165800
	BGS Groundwater Flooding Susceptibility Flooding Type: Potential for Groundwater Flooding of Property Situated Below Ground Level	A7SE (SE)	481	1	514750 164900
	BGS Groundwater Flooding Susceptibility Flooding Type: Potential for Groundwater Flooding of Property Situated Below Ground Level	A5NE (W)	482	1	513150 165300
	BGS Groundwater Flooding Susceptibility Flooding Type: Limited Potential for Groundwater Flooding to Occur	A5NE (W)	497	1	513150 165200
1	Discharge Consents Operator: S.I.T.A. (Gb) Ltd. Property Type: Undefined Or Other Location: Elmbridge Council Depot, Off Mill Road, Esher, Surrey Authority: Environment Agency, Thames Region Catchment Area: Not Given Reference: CTWC.2768 Permit Version: 1 Effective Date: 1st September 1988 Issued Date: 1st September 1988 Revocation Date: 1st February 2005 Discharge Type: Discharge Of Other Matter-Surface Water Discharge Environment: Freshwater Stream/River Receiving Water: Unnamed Trib Of The River Mole Status: Revoked (Water Resources Act 1991, Section 88 & Schedule 10 as amended by Environment Act 1995) Positional Accuracy: Located by supplier to within 100m	A9NE (NW)	386	2	513400 165950

Map ID	Details	Quadrant Reference (Compass Direction)	Estimated Distance From Site	Contact	NGR
2	Local Authority Pollution Prevention and Controls Name: SITA Location: Mill Road, ESHER, Surrey, KT10 8BL Authority: Elmbridge Borough Council, Environmental Health Department Permit Reference: Not Given Dated: Not Supplied Process Type: Local Authority Air Pollution Control Description: PG6/34 Respraying of road vehicles Status: Authorisation revoked Positional Accuracy: Manually positioned to the road within the address or location	A9NE (NW)	307	3	513324 165770
3	Local Authority Pollution Prevention and Controls Name: Phiness Coachworks Location: Unit C4 Sandown Industrial Estate, Royal Mills, Mill Road, ESHER, Surrey, KT10 8BL Authority: Elmbridge Borough Council, Environmental Health Department Permit Reference: LA PPC/PB13 Dated: 31st March 2005 Process Type: Local Authority Pollution Prevention and Control Description: PG6/34 Respraying of road vehicles Status: Authorised Positional Accuracy: Manually positioned to the address or location	A9NE (NW)	456	3	513181 165819
4	Local Authority Pollution Prevention and Controls Name: Star Service Stations Esher Location: 107 High Street, ESHER, Surrey, KT10 9LG Authority: Elmbridge Borough Council, Environmental Health Department Permit Reference: NOT GIVEN Dated: Not Supplied Process Type: Local Authority Air Pollution Control Description: PG1/14 Petrol filling station Status: Authorised Positional Accuracy: Manually positioned to the address or location	A2NW (S)	473	3	513749 164457
	Nearest Surface Water Feature	A10SE (NW)	0	-	513896 165585
5	Pollution Incidents to Controlled Waters Property Type: Not Given Location: ESHER Authority: Environment Agency, Thames Region Pollutant: Oils - Unknown Note: Confirmed As A Pollution Incident Incident Date: 11th November 1992 Incident Reference: S1920473 Catchment Area: Not Given Receiving Water: Not Given Cause of Incident: Not Given Incident Severity: Category 3 - Minor Incident Positional Accuracy: Located by supplier to within 100m	A12NW (E)	345	2	515050 165700
6	Prosecutions Relating to Authorised Processes Location: High Street, Esher, Sw6 3bn Prosecution Text: Failure to comply with packaging waste regulations Prosecution Act: Pro97 Hearing Date: 19th November 2007 Verdict: Guilty Fine: 20500 Costs: 2833 Positional Accuracy: Un-geocodable - location cannot be found	A6SE (S)	118	2	513965 164747
	River Quality Name: Mole GQA Grade: River Quality B Reach: Downside Mill Strm - Ember Estimated Distance (km): 21.8 Flow Rate: Flow less than 10 cumecs Flow Type: River Year: 2000	A9SW (W)	481	2	513093 165588

Map ID	Details	Quadrant Reference (Compass Direction)	Estimated Distance From Site	Contact	NGR
7	<p>Water Abstractions</p> <p>Operator: Arcadis Gergahty & Miller International Ltd Licence Number: 28/39/31/0183 Permit Version: 1 Location: Scilly Isles Service Station, Portsmouth Rd, Esher- Borehole Authority: Environment Agency, Thames Region Abstraction: Environmental: Pump & Treat: Pollution Remediation Abstraction Type: Water may be abstracted from a single point Source: Groundwater Daily Rate (m3): Not Supplied Yearly Rate (m3): Not Supplied Details: Scilly Isles Service Station , Portsmouth Rd, Esher, Surrey Authorised Start: 01 January Authorised End: 31 December Permit Start Date: 14th February 2005 Permit End Date: Not Supplied Positional Accuracy: Located by supplier to within 10m</p>	A11SE (E)	32	2	514670 165500
	<p>Water Abstractions</p> <p>Operator: Hersham Village Golf Club Licence Number: 28/39/32/0090 Permit Version: 101 Location: River Mole At Hersham Village Golf Centre Authority: Environment Agency, Thames Region Abstraction: Golf Courses: Spray Irrigation - Storage Abstraction Type: Water may be abstracted from a single point Source: Surface Daily Rate (m3): Not Supplied Yearly Rate (m3): Not Supplied Details: Hersham Village Golf Centre, Hersham, Surrey Authorised Start: 01 November Authorised End: 31 March Permit Start Date: 1st April 2000 Permit End Date: Not Supplied Positional Accuracy: Located by supplier to within 10m</p>	A9SW (W)	592	2	512990 165600
	<p>Water Abstractions</p> <p>Operator: Surrey Group Plc Licence Number: 28/39/32/0090 Permit Version: 100 Location: River Mole At Hersham Village Golf Centre Authority: Environment Agency, Thames Region Abstraction: Golf Courses: Spray Irrigation - Storage Abstraction Type: Water may be abstracted from a single point Source: Surface Daily Rate (m3): 100 Yearly Rate (m3): 10000 Details: Hersham Village Golf Centre, Hersham, Surrey Authorised Start: 01 November Authorised End: 31 March Permit Start Date: 15th January 1997 Permit End Date: Not Supplied Positional Accuracy: Located by supplier to within 100m</p>	A9SW (W)	592	2	512990 165600
	<p>Groundwater Vulnerability</p> <p>Soil Classification: Soils of High Leaching Potential (U) - Soil information for restored mineral workings and urban areas is based on fewer observations than elsewhere. A worst case vulnerability classification (H) assumed, until proved otherwise Map Sheet: Sheet 39 West London Scale: 1:100,000</p>	A10SE (SE)	0	2	514123 165397
	<p>Groundwater Vulnerability</p> <p>Soil Classification: Soils of High Leaching Potential (U) - Soil information for restored mineral workings and urban areas is based on fewer observations than elsewhere. A worst case vulnerability classification (H) assumed, until proved otherwise Map Sheet: Sheet 39 West London Scale: 1:100,000</p>	A10SE (N)	0	2	514134 165593
	<p>Drift Deposits</p> <p>None</p>				
	<p>Bedrock Aquifer Designations</p> <p>Aquifer Designation: Secondary Aquifer - A</p>	A10SE (SE)	0	1	514123 165397
	<p>Bedrock Aquifer Designations</p> <p>Aquifer Designation: Secondary Aquifer - A</p>	A6NE (S)	0	1	514123 165000
	<p>Bedrock Aquifer Designations</p> <p>Aquifer Designation: Unproductive Strata</p>	A11NW (NE)	0	1	514336 165753

Map ID	Details	Quadrant Reference (Compass Direction)	Estimated Distance From Site	Contact	NGR
	Superficial Aquifer Designations Aquifer Designation: Secondary Aquifer - Undifferentiated	A10SW (NW)	0	1	513676 165627
	Superficial Aquifer Designations Aquifer Designation: Principal Aquifer	A10SE (N)	0	1	514142 165580
	Superficial Aquifer Designations Aquifer Designation: Secondary Aquifer - A	A10SW (NW)	0	1	513694 165603
	Superficial Aquifer Designations Aquifer Designation: Secondary Aquifer - A	A11SW (NE)	0	1	514312 165521
	Extreme Flooding from Rivers or Sea without Defences Type: Extent of Extreme Flooding from Rivers or Sea without Defences Flood Plain Type: Fluvial Models Boundary Accuracy: As Supplied	A11SW (NE)	0	2	514240 165621
	Extreme Flooding from Rivers or Sea without Defences Type: Extent of Extreme Flooding from Rivers or Sea without Defences Flood Plain Type: Fluvial Events Boundary Accuracy: As Supplied	A11SE (E)	0	2	514549 165468
	Extreme Flooding from Rivers or Sea without Defences Type: Extent of Extreme Flooding from Rivers or Sea without Defences Flood Plain Type: Fluvial Models Boundary Accuracy: As Supplied	A10NE (N)	42	2	514100 165801
	Extreme Flooding from Rivers or Sea without Defences Type: Extent of Extreme Flooding from Rivers or Sea without Defences Flood Plain Type: Fluvial Models and Fluvial Events Boundary Accuracy: As Supplied	A11SE (E)	88	2	514811 165540
	Extreme Flooding from Rivers or Sea without Defences Type: Extent of Extreme Flooding from Rivers or Sea without Defences Flood Plain Type: Fluvial Models Boundary Accuracy: As Supplied	A12SW (E)	157	2	514881 165595
	Extreme Flooding from Rivers or Sea without Defences Type: Extent of Extreme Flooding from Rivers or Sea without Defences Flood Plain Type: Fluvial Events Boundary Accuracy: As Supplied	A12SW (E)	246	2	514965 165627
	Extreme Flooding from Rivers or Sea without Defences Type: Extent of Extreme Flooding from Rivers or Sea without Defences Flood Plain Type: Fluvial Models Boundary Accuracy: As Supplied	A12SW (E)	248	2	514965 165636
	Flooding from Rivers or Sea without Defences Type: Extent of Flooding from Rivers or Sea without Defences Flood Plain Type: Fluvial Models Boundary Accuracy: As Supplied	A12SW (E)	109	2	514835 165552
	Areas Benefiting from Flood Defences None				
	Flood Water Storage Areas None				
	Flood Defences None				
8	OS Water Network Lines Watercourse Form: Inland river Watercourse Length: 2.3 Watercourse Level: On ground surface Permanent: True Watercourse Name: Not Supplied Catchment Name: Thames Primacy: 1	A10SE (NW)	0	4	513898 165586
9	OS Water Network Lines Watercourse Form: Inland river Watercourse Length: 17.1 Watercourse Level: On ground surface Permanent: True Watercourse Name: Not Supplied Catchment Name: Thames Primacy: 1	A11SE (E)	0	4	514628 165572

Map ID	Details	Quadrant Reference (Compass Direction)	Estimated Distance From Site	Contact	NGR
10	OS Water Network Lines Watercourse Form: Inland river Watercourse Length: 85.8 Watercourse Level: On ground surface Permanent: True Watercourse Name: Not Supplied Catchment Name: Thames Primacy: 1	A11SE (E)	0	4	514641 165583
11	OS Water Network Lines Watercourse Form: Inland river Watercourse Length: 316.2 Watercourse Level: On ground surface Permanent: True Watercourse Name: Not Supplied Catchment Name: Thames Primacy: 1	A10SE (NW)	0	4	513896 165585
12	OS Water Network Lines Watercourse Form: Inland river Watercourse Length: 122.9 Watercourse Level: On ground surface Permanent: True Watercourse Name: Not Supplied Catchment Name: Thames Primacy: 1	A10SW (NW)	2	4	513712 165645
13	OS Water Network Lines Watercourse Form: Inland river Watercourse Length: 140.3 Watercourse Level: On ground surface Permanent: True Watercourse Name: Not Supplied Catchment Name: Thames Primacy: 1	A10NE (NW)	2	4	513841 165694
14	OS Water Network Lines Watercourse Form: Inland river Watercourse Length: 421.0 Watercourse Level: On ground surface Permanent: True Watercourse Name: Not Supplied Catchment Name: Thames Primacy: 1	A10NE (N)	4	4	514052 165730
15	OS Water Network Lines Watercourse Form: Inland river Watercourse Length: 155.6 Watercourse Level: On ground surface Permanent: True Watercourse Name: Not Supplied Catchment Name: Thames Primacy: 1	A11SE (E)	9	4	514731 165588
16	OS Water Network Lines Watercourse Form: Inland river Watercourse Length: 32.7 Watercourse Level: On ground surface Permanent: True Watercourse Name: Not Supplied Catchment Name: Thames Primacy: 1	A11NE (NE)	11	4	514702 165741
17	OS Water Network Lines Watercourse Form: Inland river Watercourse Length: 97.3 Watercourse Level: Not Supplied Permanent: True Watercourse Name: Not Supplied Catchment Name: Thames Primacy: 1	A10SW (NW)	14	4	513595 165627
18	OS Water Network Lines Watercourse Form: Inland river Watercourse Length: 609.3 Watercourse Level: On ground surface Permanent: True Watercourse Name: Not Supplied Catchment Name: Thames Primacy: 1	A11SE (E)	16	4	514522 165327

Map ID	Details	Quadrant Reference (Compass Direction)	Estimated Distance From Site	Contact	NGR
19	OS Water Network Lines Watercourse Form: Inland river Watercourse Length: 11.6 Watercourse Level: On ground surface Permanent: True Watercourse Name: Not Supplied Catchment Name: Thames Primacy: 1	A10NE (NW)	17	4	513841 165694
20	OS Water Network Lines Watercourse Form: Inland river Watercourse Length: 367.6 Watercourse Level: On ground surface Permanent: True Watercourse Name: Not Supplied Catchment Name: Thames Primacy: 1	A10NE (N)	48	4	514099 165806
21	OS Water Network Lines Watercourse Form: Inland river Watercourse Length: 366.4 Watercourse Level: On ground surface Permanent: True Watercourse Name: Not Supplied Catchment Name: Thames Primacy: 1	A11SE (E)	51	4	514728 165505
22	OS Water Network Lines Watercourse Form: Inland river Watercourse Length: 49.5 Watercourse Level: Underground Permanent: True Watercourse Name: Not Supplied Catchment Name: Thames Primacy: 1	A11SE (E)	56	4	514689 165474
23	OS Water Network Lines Watercourse Form: Inland river Watercourse Length: 51.2 Watercourse Level: On ground surface Permanent: True Watercourse Name: Not Supplied Catchment Name: Thames Primacy: 1	A10NE (NW)	75	4	513938 165765
24	OS Water Network Lines Watercourse Form: Inland river Watercourse Length: 104.0 Watercourse Level: On ground surface Permanent: True Watercourse Name: Not Supplied Catchment Name: Thames Primacy: 1	A10SW (W)	83	4	513501 165565
25	OS Water Network Lines Watercourse Form: Inland river Watercourse Length: 70.3 Watercourse Level: On ground surface Permanent: True Watercourse Name: Not Supplied Catchment Name: Thames Primacy: 1	A6NW (W)	84	4	513564 165223
26	OS Water Network Lines Watercourse Form: Inland river Watercourse Length: 210.1 Watercourse Level: On ground surface Permanent: True Watercourse Name: Not Supplied Catchment Name: Thames Primacy: 1	A10SW (W)	90	4	513498 165622
27	OS Water Network Lines Watercourse Form: Inland river Watercourse Length: 3.3 Watercourse Level: On ground surface Permanent: True Watercourse Name: Not Supplied Catchment Name: Thames Primacy: 1	A10NE (NW)	100	4	513938 165792

Map ID	Details	Quadrant Reference (Compass Direction)	Estimated Distance From Site	Contact	NGR
28	OS Water Network Lines Watercourse Form: Inland river Watercourse Length: 720.7 Watercourse Level: On ground surface Permanent: True Watercourse Name: Not Supplied Catchment Name: Thames Primacy: 1	A10NE (NW)	102	4	513940 165794
29	OS Water Network Lines Watercourse Form: Inland river Watercourse Length: 95.6 Watercourse Level: On ground surface Permanent: True Watercourse Name: Not Supplied Catchment Name: Thames Primacy: 1	A11NE (NE)	105	4	514674 165879
30	OS Water Network Lines Watercourse Form: Inland river Watercourse Length: 39.2 Watercourse Level: On ground surface Permanent: True Watercourse Name: Not Supplied Catchment Name: Thames Primacy: 1	A6NW (W)	140	4	513526 165159
31	OS Water Network Lines Watercourse Form: Inland river Watercourse Length: 107.8 Watercourse Level: On ground surface Permanent: True Watercourse Name: Not Supplied Catchment Name: Thames Primacy: 1	A6NW (W)	141	4	513519 165171
32	OS Water Network Lines Watercourse Form: Inland river Watercourse Length: 420.7 Watercourse Level: On ground surface Permanent: True Watercourse Name: Not Supplied Catchment Name: Thames Primacy: 1	A10NE (N)	164	4	513986 165871
33	OS Water Network Lines Watercourse Form: Inland river Watercourse Length: 37.1 Watercourse Level: On ground surface Permanent: True Watercourse Name: Not Supplied Catchment Name: Thames Primacy: 1	A9SE (W)	175	4	513417 165494
34	OS Water Network Lines Watercourse Form: Inland river Watercourse Length: 13.1 Watercourse Level: Underground Permanent: True Watercourse Name: Not Supplied Catchment Name: Thames Primacy: 1	A11NE (NE)	189	4	514656 165972
35	OS Water Network Lines Watercourse Form: Inland river Watercourse Length: 5.2 Watercourse Level: On ground surface Permanent: True Watercourse Name: Not Supplied Catchment Name: Thames Primacy: 1	A11NE (NE)	201	4	514654 165985
36	OS Water Network Lines Watercourse Form: Inland river Watercourse Length: 38.0 Watercourse Level: On ground surface Permanent: True Watercourse Name: Not Supplied Catchment Name: Thames Primacy: 1	A11NW (N)	202	4	514285 165970

Map ID	Details	Quadrant Reference (Compass Direction)	Estimated Distance From Site	Contact	NGR
37	OS Water Network Lines Watercourse Form: Inland river Watercourse Length: 117.1 Watercourse Level: On ground surface Permanent: True Watercourse Name: Not Supplied Catchment Name: Thames Primacy: 1	A11NE (NE)	205	4	514653 165990
38	OS Water Network Lines Watercourse Form: Inland river Watercourse Length: 3.7 Watercourse Level: On ground surface Permanent: True Watercourse Name: Not Supplied Catchment Name: Thames Primacy: 2	A11NE (NE)	205	4	514653 165990
39	OS Water Network Lines Watercourse Form: Inland river Watercourse Length: 6.3 Watercourse Level: Underground Permanent: True Watercourse Name: Not Supplied Catchment Name: Thames Primacy: 2	A11NE (NE)	206	4	514657 165990
40	OS Water Network Lines Watercourse Form: Inland river Watercourse Length: 68.6 Watercourse Level: On ground surface Permanent: True Watercourse Name: Not Supplied Catchment Name: Thames Primacy: 2	A11NE (NE)	208	4	514663 165990
41	OS Water Network Lines Watercourse Form: Inland river Watercourse Length: 71.4 Watercourse Level: On ground surface Permanent: True Watercourse Name: Not Supplied Catchment Name: Thames Primacy: 1	A15SW (N)	223	4	514345 165996
42	OS Water Network Lines Watercourse Form: Inland river Watercourse Length: 2.1 Watercourse Level: Underground Permanent: True Watercourse Name: Not Supplied Catchment Name: Thames Primacy: 2	A15SE (NE)	251	4	514723 166022
43	OS Water Network Lines Watercourse Form: Inland river Watercourse Length: 92.5 Watercourse Level: On ground surface Permanent: True Watercourse Name: Not Supplied Catchment Name: Thames Primacy: 2	A15SE (NE)	252	4	514725 166023
44	OS Water Network Lines Watercourse Form: Inland river Watercourse Length: 218.9 Watercourse Level: On ground surface Permanent: True Watercourse Name: Not Supplied Catchment Name: Thames Primacy: 1	A9SE (W)	256	4	513339 165459
45	OS Water Network Lines Watercourse Form: Inland river Watercourse Length: 68.6 Watercourse Level: On ground surface Permanent: True Watercourse Name: Not Supplied Catchment Name: Thames Primacy: 1	A9SE (W)	266	4	513325 165506

Map ID	Details	Quadrant Reference (Compass Direction)	Estimated Distance From Site	Contact	NGR
46	OS Water Network Lines Watercourse Form: Inland river Watercourse Length: 59.5 Watercourse Level: On ground surface Permanent: True Watercourse Name: Not Supplied Catchment Name: Thames Primacy: 1	A15SW (NE)	286	4	514460 166075
47	OS Water Network Lines Watercourse Form: Inland river Watercourse Length: 28.7 Watercourse Level: On ground surface Permanent: True Watercourse Name: Not Supplied Catchment Name: Thames Primacy: 1	A9SE (W)	291	4	513290 165569
48	OS Water Network Lines Watercourse Form: Inland river Watercourse Length: 134.1 Watercourse Level: On ground surface Permanent: True Watercourse Name: Not Supplied Catchment Name: Thames Primacy: 1	A9SE (W)	296	4	513287 165563
49	OS Water Network Lines Watercourse Form: Inland river Watercourse Length: 2.5 Watercourse Level: Underground Permanent: True Watercourse Name: Not Supplied Catchment Name: Thames Primacy: 1	A15SE (NE)	315	4	514650 166105
50	OS Water Network Lines Watercourse Form: Inland river Watercourse Length: 85.3 Watercourse Level: On ground surface Permanent: True Watercourse Name: Not Supplied Catchment Name: Thames Primacy: 1	A15SE (NE)	318	4	514651 166108
51	OS Water Network Lines Watercourse Form: Inland river Watercourse Length: 4.3 Watercourse Level: Underground Permanent: True Watercourse Name: Not Supplied Catchment Name: Thames Primacy: 2	A15SE (NE)	318	4	514806 166068
52	OS Water Network Lines Watercourse Form: Inland river Watercourse Length: 184.5 Watercourse Level: On ground surface Permanent: True Watercourse Name: Not Supplied Catchment Name: Thames Primacy: 2	A15SE (NE)	321	4	514810 166070
53	OS Water Network Lines Watercourse Form: Inland river Watercourse Length: 27.5 Watercourse Level: On ground surface Permanent: True Watercourse Name: Not Supplied Catchment Name: Thames Primacy: 1	A12NW (E)	326	4	515038 165668
54	OS Water Network Lines Watercourse Form: Inland river Watercourse Length: 78.3 Watercourse Level: Not Supplied Permanent: True Watercourse Name: Not Supplied Catchment Name: Thames Primacy: 1	A12NW (E)	333	4	515040 165690

Map ID	Details	Quadrant Reference (Compass Direction)	Estimated Distance From Site	Contact	NGR
55	OS Water Network Lines Watercourse Form: Inland river Watercourse Length: 63.4 Watercourse Level: Not Supplied Permanent: True Watercourse Name: Not Supplied Catchment Name: Thames Primacy: 1	A12NW (E)	353	4	515063 165680
56	OS Water Network Lines Watercourse Form: Inland river Watercourse Length: 230.9 Watercourse Level: On ground surface Permanent: True Watercourse Name: Not Supplied Catchment Name: Thames Primacy: 1	A15SE (NE)	366	4	514729 166137
57	OS Water Network Lines Watercourse Form: Inland river Watercourse Length: 194.0 Watercourse Level: On ground surface Permanent: True Watercourse Name: River Mole Catchment Name: Thames Primacy: 1	A9NE (W)	372	4	513228 165705
58	OS Water Network Lines Watercourse Form: Inland river Watercourse Length: 55.8 Watercourse Level: Not Supplied Permanent: True Watercourse Name: Not Supplied Catchment Name: Thames Primacy: 1	A12SW (E)	380	4	515106 165549
59	OS Water Network Lines Watercourse Form: Inland river Watercourse Length: 120.8 Watercourse Level: On ground surface Permanent: True Watercourse Name: Not Supplied Catchment Name: Thames Primacy: 1	A12SW (E)	380	4	515097 165429
60	OS Water Network Lines Watercourse Form: Inland river Watercourse Length: 95.8 Watercourse Level: On ground surface Permanent: True Watercourse Name: Not Supplied Catchment Name: Thames Primacy: 1	A12SW (E)	386	4	515110 165605
61	OS Water Network Lines Watercourse Form: Inland river Watercourse Length: 52.7 Watercourse Level: On ground surface Permanent: True Watercourse Name: River Mole Catchment Name: Thames Primacy: 1	A9NE (W)	387	4	513223 165742
62	OS Water Network Lines Watercourse Form: Inland river Watercourse Length: 59.8 Watercourse Level: On ground surface Permanent: True Watercourse Name: Not Supplied Catchment Name: Thames Primacy: 1	A9SE (W)	387	4	513230 165370
63	OS Water Network Lines Watercourse Form: Inland river Watercourse Length: 134.5 Watercourse Level: On ground surface Permanent: True Watercourse Name: Not Supplied Catchment Name: Thames Primacy: 1	A8NW (E)	395	4	515087 165308

Map ID	Details	Quadrant Reference (Compass Direction)	Estimated Distance From Site	Contact	NGR
64	OS Water Network Lines Watercourse Form: Lake Watercourse Length: 114.0 Watercourse Level: On ground surface Permanent: True Watercourse Name: Not Supplied Catchment Name: Thames Primacy: 1	A14SW (NW)	401	4	513785 166076
65	OS Water Network Lines Watercourse Form: Inland river Watercourse Length: 7.4 Watercourse Level: On ground surface Permanent: True Watercourse Name: Not Supplied Catchment Name: Thames Primacy: 1	A12NW (E)	408	4	515109 165727
66	OS Water Network Lines Watercourse Form: Inland river Watercourse Length: 11.6 Watercourse Level: Not Supplied Permanent: True Watercourse Name: Not Supplied Catchment Name: Thames Primacy: 1	A12NW (E)	411	4	515118 165701
67	OS Water Network Lines Watercourse Form: Inland river Watercourse Length: 275.5 Watercourse Level: On ground surface Permanent: True Watercourse Name: Not Supplied Catchment Name: Thames Primacy: 1	A12NW (E)	413	4	515117 165712
68	OS Water Network Lines Watercourse Form: Inland river Watercourse Length: 313.0 Watercourse Level: On ground surface Permanent: True Watercourse Name: Not Supplied Catchment Name: Thames Primacy: 1	A12NW (E)	416	4	515116 165731
69	OS Water Network Lines Watercourse Form: Inland river Watercourse Length: 128.4 Watercourse Level: On ground surface Permanent: True Watercourse Name: Not Supplied Catchment Name: Thames Primacy: 1	A5NE (W)	426	4	513207 165299
70	OS Water Network Lines Watercourse Form: Inland river Watercourse Length: 53.2 Watercourse Level: Not Supplied Permanent: True Watercourse Name: Not Supplied Catchment Name: Thames Primacy: 1	A5NE (W)	426	4	513207 165299
71	OS Water Network Lines Watercourse Form: Inland river Watercourse Length: 246.4 Watercourse Level: On ground surface Permanent: True Watercourse Name: River Mole Catchment Name: Thames Primacy: 1	A9NE (W)	438	4	513176 165764
72	OS Water Network Lines Watercourse Form: Lake Watercourse Length: 49.5 Watercourse Level: On ground surface Permanent: True Watercourse Name: Not Supplied Catchment Name: Thames Primacy: 1	A9SE (W)	444	4	513170 165371

Map ID	Details	Quadrant Reference (Compass Direction)	Estimated Distance From Site	Contact	NGR
73	OS Water Network Lines Watercourse Form: Inland river Watercourse Length: 79.3 Watercourse Level: On ground surface Permanent: True Watercourse Name: Not Supplied Catchment Name: Thames Primacy: 1	A9NE (NW)	445	4	513337 165980
74	OS Water Network Lines Watercourse Form: Inland river Watercourse Length: 86.3 Watercourse Level: On ground surface Permanent: True Watercourse Name: Not Supplied Catchment Name: Thames Primacy: 2	A8NW (E)	452	4	515086 165295
75	OS Water Network Lines Watercourse Form: Inland river Watercourse Length: 496.4 Watercourse Level: On ground surface Permanent: True Watercourse Name: Not Supplied Catchment Name: Thames Primacy: 1	A8NW (E)	452	4	515086 165295
76	OS Water Network Lines Watercourse Form: Inland river Watercourse Length: 84.1 Watercourse Level: On ground surface Permanent: True Watercourse Name: Not Supplied Catchment Name: Thames Primacy: 1	A9SE (W)	458	4	513168 165334
77	OS Water Network Lines Watercourse Form: Lake Watercourse Length: 93.7 Watercourse Level: On ground surface Permanent: True Watercourse Name: Not Supplied Catchment Name: Thames Primacy: 1	A9SW (W)	470	4	513133 165389
78	OS Water Network Lines Watercourse Form: Inland river Watercourse Length: 191.4 Watercourse Level: On ground surface Permanent: True Watercourse Name: The Rythe Catchment Name: Thames Primacy: 1	A12SE (E)	470	4	515174 165377
79	OS Water Network Lines Watercourse Form: Inland river Watercourse Length: 106.8 Watercourse Level: On ground surface Permanent: True Watercourse Name: Not Supplied Catchment Name: Thames Primacy: 1	A9SW (W)	473	4	513110 165526
80	OS Water Network Lines Watercourse Form: Inland river Watercourse Length: 67.1 Watercourse Level: On ground surface Permanent: True Watercourse Name: Not Supplied Catchment Name: Thames Primacy: 1	A13SE (NW)	474	4	513315 166001
81	OS Water Network Lines Watercourse Form: Inland river Watercourse Length: 38.3 Watercourse Level: Underground Permanent: True Watercourse Name: The Rythe Catchment Name: Thames Primacy: 1	A12SE (E)	475	4	515201 165542

Map ID	Details	Quadrant Reference (Compass Direction)	Estimated Distance From Site	Contact	NGR
82	OS Water Network Lines Watercourse Form: Inland river Watercourse Length: 81.7 Watercourse Level: On ground surface Permanent: True Watercourse Name: River Mole Catchment Name: Thames Primacy: 2	A9SW (W)	479	4	513105 165632
83	OS Water Network Lines Watercourse Form: Inland river Watercourse Length: 424.1 Watercourse Level: On ground surface Permanent: True Watercourse Name: The Rythe Catchment Name: Thames Primacy: 1	A12SE (E)	480	4	515206 165580
84	OS Water Network Lines Watercourse Form: Inland river Watercourse Length: 5.2 Watercourse Level: Underground Permanent: True Watercourse Name: Not Supplied Catchment Name: Thames Primacy: 2	A16SW (NE)	480	4	514972 166158
85	OS Water Network Lines Watercourse Form: Lake Watercourse Length: 52.7 Watercourse Level: On ground surface Permanent: True Watercourse Name: Not Supplied Catchment Name: Thames Primacy: 1	A9SW (W)	483	4	513127 165377
86	OS Water Network Lines Watercourse Form: Inland river Watercourse Length: 24.2 Watercourse Level: On ground surface Permanent: True Watercourse Name: Not Supplied Catchment Name: Thames Primacy: 2	A16SW (NE)	485	4	514977 166161
87	OS Water Network Lines Watercourse Form: Inland river Watercourse Length: 1.2 Watercourse Level: On ground surface Permanent: True Watercourse Name: The Rythe Catchment Name: Thames Primacy: 1	A12SE (E)	495	4	515175 165356
88	OS Water Network Lines Watercourse Form: Inland river Watercourse Length: 33.7 Watercourse Level: On ground surface Permanent: True Watercourse Name: The Rythe Catchment Name: Thames Primacy: 1	A12SE (E)	496	4	515167 165324

Map ID	Details	Quadrant Reference (Compass Direction)	Estimated Distance From Site	Contact	NGR
89	Historical Landfill Sites Licence Holder: Greenham Construction Materials Limited Location: Molesey Road, Hersham Name: Molesey Road Landfill Phase I Operator Location: Not Supplied Boundary Accuracy: As Supplied Provider Reference: EAHLD11644 First Input Date: 31st December 1949 Last Input Date: 31st March 1994 Specified Waste: Deposited Waste included Inert, Industrial, Commercial and Household Waste Type: EA Waste Ref: 0 Regis Ref: Not Supplied WRC Ref: 3600/0172 BGS Ref: Not Supplied Other Ref: EL/2, 5/202, EL/4/LLC PHASE 1	A10NE (N)	193	2	513976 165898
90	Licensed Waste Management Facilities (Locations) Licence Number: 83173 Location: Mill Road Depot, Mill Road, Esher, Surrey, KT10 8AS Operator Name: Sita U K Ltd Operator Location: Not Supplied Authority: Environment Agency - South East Region, Kent & South London Area Site Category: Household, Commercial And Industrial Transfer Stations Licence Status: Surrendered Issued: 22nd February 1994 Last Modified: Not Supplied Expires: Not Supplied Suspended: Not Supplied Revoked: Not Supplied Surrendered: 17th October 2003 IPPC Reference: Not Supplied Positional Accuracy: Located by supplier to within 10m	A9NE (NW)	437	2	513289 165932
	Local Authority Landfill Coverage Name: Elmbridge Borough Council - Has no landfill data to supply		0	3	514123 165397
	Local Authority Landfill Coverage Name: Surrey County Council - Has supplied landfill data		0	5	514123 165397
91	Local Authority Recorded Landfill Sites Location: Not Supplied Reference: EL/4/LLC Authority: Surrey County Council Last Reported Status: Not Supplied Types of Waste: Not Supplied Date of Closure: Not Supplied Positional Accuracy: Positioned by the supplier Boundary Quality: Good	A10NE (N)	185	5	513984 165892
92	Potentially Infilled Land (Water) Use: Unknown Filled Ground (Pond, marsh, river, stream, dock etc) Date of Mapping: 1897	A12NW (E)	263	-	514971 165677
93	Potentially Infilled Land (Water) Use: Unknown Filled Ground (Pond, marsh, river, stream, dock etc) Date of Mapping: 1898	A15SE (NE)	276	-	514648 166066
94	Potentially Infilled Land (Water) Use: Unknown Filled Ground (Pond, marsh, river, stream, dock etc) Date of Mapping: 1962	A9SE (W)	319	-	513262 165611
95	Potentially Infilled Land (Water) Use: Unknown Filled Ground (Pond, marsh, river, stream, dock etc) Date of Mapping: 1871	A16SW (NE)	399	-	515000 166018
96	Potentially Infilled Land (Water) Use: Unknown Filled Ground (Pond, marsh, river, stream, dock etc) Date of Mapping: 1897	A3NW (S)	431	-	514184 164436
97	Potentially Infilled Land (Water) Use: Unknown Filled Ground (Pond, marsh, river, stream, dock etc) Date of Mapping: 1872	A16SW (NE)	433	-	514989 166082
98	Potentially Infilled Land (Water) Use: Unknown Filled Ground (Pond, marsh, river, stream, dock etc) Date of Mapping: 1897	A12SW (E)	446	-	515159 165461

Map ID	Details	Quadrant Reference (Compass Direction)	Estimated Distance From Site	Contact	NGR
99	Potentially Infilled Land (Water) Use: Unknown Filled Ground (Pond, marsh, river, stream, dock etc) Date of Mapping: 1872	A16SW (NE)	450	-	515044 166043
100	Potentially Infilled Land (Water) Use: Unknown Filled Ground (Pond, marsh, river, stream, dock etc) Date of Mapping: 1898	A12NW (NE)	452	-	515104 165940
101	Potentially Infilled Land (Water) Use: Unknown Filled Ground (Pond, marsh, river, stream, dock etc) Date of Mapping: 1872	A16SW (NE)	489	-	515040 166110
102	Registered Waste Transfer Sites Licence Holder: Sita (Gb) Ltd Licence Reference: SCC/19259/213 (EL/ 23) Site Location: Mill Road Depot, ESHER, Surrey, KT10 8AS Operator Location: 200 Aldersgate Street, LONDON, Greater London, EC1A 4JJ Authority: Environment Agency - Thames Region, South East Area Site Category: Transfer Max Input Rate: Very Small (Less than 10,000 tonnes per year) Waste Source: No known restriction on source of waste Restrictions: Licence Status: Operational as far as is known Dated: 22nd February 1994 Preceded By: Not Given Licence: Superseded By: Not Given Licence: Positional Accuracy: Located by supplier to within 100m Boundary Quality: Not Supplied Authorised Waste: Concrete, Stone, Clay, Brickwork Dry Solid Uncontam. Soils/Overburden Max. Waste Permitted By Licence Paper/Cardboard Waste Scrap Metals, Plastics Tree Loppings/Plant Material Weathered Tar Coated Stone, Rubber, Wood/Wood Products Prohibited Waste: Clinical - As In Control. Waste Regs'92 Drummed/Wastes In Sealed Containers Liquid Wastes Poisonous, Noxious, Polluting Wastes Special Wastes Waste N.O.S.	A9NE (NW)	435	2	513290 165930

Map ID	Details	Quadrant Reference (Compass Direction)	Estimated Distance From Site	Contact	NGR
	BGS 1:625,000 Solid Geology Description: Thames Group	A10SE (SE)	0	1	514123 165397
	BGS 1:625,000 Solid Geology Description: Bracklesham Group And Barton Group (Undifferentiated)	A6SE (S)	0	1	514006 164942
	BGS Estimated Soil Chemistry Source: British Geological Survey, National Geoscience Information Service Soil Sample Type: Rural Soil Arsenic Concentration: <15 mg/kg Cadmium Concentration: <1.8 mg/kg Chromium Concentration: 60 - 90 mg/kg Lead Concentration: 100 - 200 mg/kg Nickel Concentration: 15 - 30 mg/kg	A6NE (S)	0	1	514123 165000
	BGS Estimated Soil Chemistry Source: British Geological Survey, National Geoscience Information Service Soil Sample Type: Rural Soil Arsenic Concentration: <15 mg/kg Cadmium Concentration: <1.8 mg/kg Chromium Concentration: 60 - 90 mg/kg Lead Concentration: 100 - 200 mg/kg Nickel Concentration: 15 - 30 mg/kg	A10SE (W)	0	1	514000 165397
	BGS Estimated Soil Chemistry Source: British Geological Survey, National Geoscience Information Service Soil Sample Type: Rural Soil Arsenic Concentration: <15 mg/kg Cadmium Concentration: <1.8 mg/kg Chromium Concentration: 60 - 90 mg/kg Lead Concentration: 200 - 300 mg/kg Nickel Concentration: 15 - 30 mg/kg	A6NE (S)	0	1	514000 165000
	BGS Estimated Soil Chemistry Source: British Geological Survey, National Geoscience Information Service Soil Sample Type: Rural Soil Arsenic Concentration: <15 mg/kg Cadmium Concentration: <1.8 mg/kg Chromium Concentration: 60 - 90 mg/kg Lead Concentration: <100 mg/kg Nickel Concentration: 15 - 30 mg/kg	A10SE (SE)	0	1	514123 165397
	BGS Estimated Soil Chemistry Source: British Geological Survey, National Geoscience Information Service Soil Sample Type: Rural Soil Arsenic Concentration: <15 mg/kg Cadmium Concentration: <1.8 mg/kg Chromium Concentration: 60 - 90 mg/kg Lead Concentration: 100 - 200 mg/kg Nickel Concentration: 15 - 30 mg/kg	A6NW (SW)	234	1	513500 165000

Map ID	Details	Quadrant Reference (Compass Direction)	Estimated Distance From Site	Contact	NGR
	BGS Estimated Soil Chemistry Source: British Geological Survey, National Geoscience Information Service Soil Sample Type: Rural Soil Arsenic <15 mg/kg Concentration: Cadmium <1.8 mg/kg Concentration: Chromium 60 - 90 mg/kg Concentration: Lead Concentration: 300 - 600 mg/kg Nickel 15 - 30 mg/kg Concentration:	A2NE (S)	342	1	514000 164500
	BGS Measured Urban Soil Chemistry No data available				
	BGS Urban Soil Chemistry Averages No data available				
	Coal Mining Affected Areas In an area that might not be affected by coal mining				
	Mining Instability Mining Evidence: Conclusive Rock Mining Source: Ove Arup & Partners Boundary Quality: As Supplied	A10SE (SE)	0	-	514123 165397
	Man-Made Mining Cavities Easting: 513900 Northing: 165000 Distance: 0 Quadrant Reference: A6 Quadrant Reference: NE Bearing Ref: SW Cavity Type: Possible Sand Mining Commodity: Sandstone Solid Geology Detail: Bagshot Formation, Claygate Member, London Clay Superficial Geology No Details Detail:	A6NE (SW)	0	6	513900 165000
	Man-Made Mining Cavities Easting: 514000 Northing: 164700 Distance: 145 Quadrant Reference: A6 Quadrant Reference: SE Bearing Ref: S Cavity Type: Adit Entry Pillar and Stall Sand Mines Commodity: Sandstone Solid Geology Detail: Bagshot Formation, Claygate Member, London Clay Superficial Geology No Details Detail:	A6SE (S)	145	6	514000 164700
	Non Coal Mining Areas of Great Britain Risk: Highly Likely Source: British Geological Survey, National Geoscience Information Service	A6SE (S)	158	1	513921 164732
	Potential for Collapsible Ground Stability Hazards Hazard Potential: No Hazard Source: British Geological Survey, National Geoscience Information Service	A10SW (NW)	0	1	513676 165627
	Potential for Collapsible Ground Stability Hazards Hazard Potential: Very Low Source: British Geological Survey, National Geoscience Information Service	A10SE (SE)	0	1	514123 165397
	Potential for Collapsible Ground Stability Hazards Hazard Potential: Very Low Source: British Geological Survey, National Geoscience Information Service	A6NE (S)	0	1	514123 165000
	Potential for Compressible Ground Stability Hazards Hazard Potential: No Hazard Source: British Geological Survey, National Geoscience Information Service	A10SE (SE)	0	1	514123 165397
	Potential for Compressible Ground Stability Hazards Hazard Potential: Moderate Source: British Geological Survey, National Geoscience Information Service	A10SW (NW)	0	1	513801 165647
	Potential for Compressible Ground Stability Hazards Hazard Potential: Moderate Source: British Geological Survey, National Geoscience Information Service	A10NE (NW)	0	1	513855 165680

Map ID	Details	Quadrant Reference (Compass Direction)	Estimated Distance From Site	Contact	NGR
	Potential for Compressible Ground Stability Hazards Hazard Potential: No Hazard Source: British Geological Survey, National Geoscience Information Service	A6NE (S)	0	1	514123 165000
	Potential for Compressible Ground Stability Hazards Hazard Potential: Moderate Source: British Geological Survey, National Geoscience Information Service	A6NW (SW)	0	1	513794 165085
	Potential for Compressible Ground Stability Hazards Hazard Potential: Moderate Source: British Geological Survey, National Geoscience Information Service	A10SW (NW)	0	1	513676 165627
	Potential for Compressible Ground Stability Hazards Hazard Potential: Very Low Source: British Geological Survey, National Geoscience Information Service	A11NW (NE)	0	1	514309 165769
	Potential for Compressible Ground Stability Hazards Hazard Potential: Very Low Source: British Geological Survey, National Geoscience Information Service	A11SE (E)	17	1	514582 165408
	Potential for Compressible Ground Stability Hazards Hazard Potential: Very Low Source: British Geological Survey, National Geoscience Information Service	A10NE (N)	25	1	514104 165773
	Potential for Compressible Ground Stability Hazards Hazard Potential: Very Low Source: British Geological Survey, National Geoscience Information Service	A11NE (NE)	25	1	514692 165800
	Potential for Compressible Ground Stability Hazards Hazard Potential: Very Low Source: British Geological Survey, National Geoscience Information Service	A10NE (NW)	77	1	513868 165762
	Potential for Compressible Ground Stability Hazards Hazard Potential: Very Low Source: British Geological Survey, National Geoscience Information Service	A10NW (NW)	135	1	513556 165745
	Potential for Compressible Ground Stability Hazards Hazard Potential: Moderate Source: British Geological Survey, National Geoscience Information Service	A10NW (NW)	166	1	513761 165828
	Potential for Ground Dissolution Stability Hazards Hazard Potential: No Hazard Source: British Geological Survey, National Geoscience Information Service	A10SE (SE)	0	1	514123 165397
	Potential for Ground Dissolution Stability Hazards Hazard Potential: No Hazard Source: British Geological Survey, National Geoscience Information Service	A6NE (S)	0	1	514123 165000
	Potential for Landslide Ground Stability Hazards Hazard Potential: Very Low Source: British Geological Survey, National Geoscience Information Service	A10SE (SE)	0	1	514123 165397
	Potential for Landslide Ground Stability Hazards Hazard Potential: Very Low Source: British Geological Survey, National Geoscience Information Service	A6NE (S)	0	1	514123 165000
	Potential for Running Sand Ground Stability Hazards Hazard Potential: Very Low Source: British Geological Survey, National Geoscience Information Service	A6NW (SW)	0	1	513794 165085
	Potential for Running Sand Ground Stability Hazards Hazard Potential: Low Source: British Geological Survey, National Geoscience Information Service	A6NE (S)	0	1	514123 165000
	Potential for Running Sand Ground Stability Hazards Hazard Potential: Low Source: British Geological Survey, National Geoscience Information Service	A6NE (S)	0	1	514107 165218
	Potential for Running Sand Ground Stability Hazards Hazard Potential: Very Low Source: British Geological Survey, National Geoscience Information Service	A10SE (SE)	0	1	514123 165397
	Potential for Running Sand Ground Stability Hazards Hazard Potential: Very Low Source: British Geological Survey, National Geoscience Information Service	A7NW (S)	5	1	514204 165000
	Potential for Running Sand Ground Stability Hazards Hazard Potential: No Hazard Source: British Geological Survey, National Geoscience Information Service	A10NE (N)	53	1	514096 165807
	Potential for Running Sand Ground Stability Hazards Hazard Potential: No Hazard Source: British Geological Survey, National Geoscience Information Service	A6NW (SW)	245	1	513492 164983

Map ID	Details	Quadrant Reference (Compass Direction)	Estimated Distance From Site	Contact	NGR
	Potential for Shrinking or Swelling Clay Ground Stability Hazards Hazard Potential: No Hazard Source: British Geological Survey, National Geoscience Information Service	A10SW (W)	0	1	513610 165606
	Potential for Shrinking or Swelling Clay Ground Stability Hazards Hazard Potential: Low Source: British Geological Survey, National Geoscience Information Service	A10SE (SE)	0	1	514123 165397
	Potential for Shrinking or Swelling Clay Ground Stability Hazards Hazard Potential: Moderate Source: British Geological Survey, National Geoscience Information Service	A11NW (NE)	0	1	514336 165753
	Potential for Shrinking or Swelling Clay Ground Stability Hazards Hazard Potential: No Hazard Source: British Geological Survey, National Geoscience Information Service	A11SW (NE)	0	1	514447 165642
	Potential for Shrinking or Swelling Clay Ground Stability Hazards Hazard Potential: No Hazard Source: British Geological Survey, National Geoscience Information Service	A11SE (E)	0	1	514563 165346
	Potential for Shrinking or Swelling Clay Ground Stability Hazards Hazard Potential: No Hazard Source: British Geological Survey, National Geoscience Information Service	A10NE (NW)	0	1	514006 165673
	Potential for Shrinking or Swelling Clay Ground Stability Hazards Hazard Potential: No Hazard Source: British Geological Survey, National Geoscience Information Service	A6NE (S)	0	1	514107 165218
	Potential for Shrinking or Swelling Clay Ground Stability Hazards Hazard Potential: No Hazard Source: British Geological Survey, National Geoscience Information Service	A6NE (S)	0	1	514123 165000
	Potential for Shrinking or Swelling Clay Ground Stability Hazards Hazard Potential: Low Source: British Geological Survey, National Geoscience Information Service	A7NW (S)	5	1	514204 165000
	Potential for Shrinking or Swelling Clay Ground Stability Hazards Hazard Potential: Very Low Source: British Geological Survey, National Geoscience Information Service	A10NE (N)	36	1	514104 165773
	Potential for Shrinking or Swelling Clay Ground Stability Hazards Hazard Potential: Very Low Source: British Geological Survey, National Geoscience Information Service	A10NE (N)	207	1	514121 165942
	Potential for Shrinking or Swelling Clay Ground Stability Hazards Hazard Potential: Very Low Source: British Geological Survey, National Geoscience Information Service	A6NW (SW)	245	1	513492 164983
	Radon Potential - Radon Affected Areas Affected Area: The property is in a Lower probability radon area (less than 1% of homes are estimated to be at or above the Action Level). Source: British Geological Survey, National Geoscience Information Service	A10SE (SE)	0	1	514123 165397
	Radon Potential - Radon Affected Areas Affected Area: The property is in a Lower probability radon area (less than 1% of homes are estimated to be at or above the Action Level). Source: British Geological Survey, National Geoscience Information Service	A6NE (S)	0	1	514123 164999
	Radon Potential - Radon Protection Measures Protection Measure: No radon protective measures are necessary in the construction of new dwellings or extensions Source: British Geological Survey, National Geoscience Information Service	A10SE (SE)	0	1	514123 165397
	Radon Potential - Radon Protection Measures Protection Measure: No radon protective measures are necessary in the construction of new dwellings or extensions Source: British Geological Survey, National Geoscience Information Service	A6NE (S)	0	1	514123 164999

Map ID	Details	Quadrant Reference (Compass Direction)	Estimated Distance From Site	Contact	NGR
103	Contemporary Trade Directory Entries Name: A P Services Surrey Ltd Location: Sandown Park, Portsmouth Road, Esher, Surrey, KT10 9AJ Classification: Agricultural Engineers Status: Inactive Positional Accuracy: Manually positioned within the geographical locality	A6NE (S)	0	-	514050 165117
104	Contemporary Trade Directory Entries Name: Flowserve Location: Thames Mews, Portsmouth Road, Esher, Surrey, KT10 9AD Classification: Pumps - Sales, Servicing & Repairs Status: Active Positional Accuracy: Automatically positioned to the address	A11SE (E)	9	-	514618 165555
105	Contemporary Trade Directory Entries Name: Giro Location: 2, High Street, Esher, KT10 9RT Classification: Cycle Accessories, Manufacturers & Wholesalers Status: Active Positional Accuracy: Automatically positioned to the address	A6SE (S)	10	-	514024 164839
105	Contemporary Trade Directory Entries Name: Swan Location: 8 High St, Esher, Surrey, KT10 9RT Classification: Dry Cleaners Status: Inactive Positional Accuracy: Manually positioned to the address or location	A6SE (S)	26	-	514010 164830
106	Contemporary Trade Directory Entries Name: Ernest Doe Power Location: 1 Wellands, Portsmouth Road, Esher, KT10 9AD Classification: Lawnmowers & Garden Machinery - Sales & Service Status: Active Positional Accuracy: Automatically positioned to the address	A11SE (E)	14	-	514658 165515
107	Contemporary Trade Directory Entries Name: Yoplait Uk Ltd Location: St. Andrews House, Portsmouth Road, Esher, Surrey, KT10 9TA Classification: Dairies Status: Inactive Positional Accuracy: Automatically positioned to the address	A6SE (S)	38	-	514152 164904
108	Contemporary Trade Directory Entries Name: Elmgilde Location: 132, Lower Green Road, Esher, Surrey, KT10 8HB Classification: French Polishing Status: Inactive Positional Accuracy: Automatically positioned to the address	A10NE (N)	43	-	513988 165747
108	Contemporary Trade Directory Entries Name: Elmgilde French Polishing Location: 132, Lower Green Road, Esher, Surrey, KT10 8HB Classification: French Polishing Status: Inactive Positional Accuracy: Automatically positioned to the address	A10NE (N)	43	-	513988 165747
109	Contemporary Trade Directory Entries Name: Esher Property Preservation Ltd Location: The News Kiosk, Esher Railway Station, Station Road, Esher, KT10 8DY Classification: Woodworm Control Status: Inactive Positional Accuracy: Automatically positioned to the address	A11NE (NE)	47	-	514686 165821
110	Contemporary Trade Directory Entries Name: Murphy Services Cleaning Ltd Location: 160, Lower Green Road, Esher, Surrey, KT10 8HA Classification: Commercial Cleaning Services Status: Active Positional Accuracy: Automatically positioned to the address	A10NW (NW)	56	-	513686 165692
111	Contemporary Trade Directory Entries Name: Green & Fay Location: Portsmouth Rd, Esher, Surrey, KT10 9AD Classification: Kitchen Furniture Manufacturers Status: Inactive Positional Accuracy: Manually positioned within the geographical locality	A11SE (E)	63	-	514628 165472
111	Contemporary Trade Directory Entries Name: Cattpro Location: K A D House, Portsmouth Road, Esher, Surrey, KT10 9AD Classification: Telecommunications Equipment & Systems Status: Inactive Positional Accuracy: Automatically positioned to the address	A11SE (E)	90	-	514600 165434

Map ID	Details	Quadrant Reference (Compass Direction)	Estimated Distance From Site	Contact	NGR
112	Contemporary Trade Directory Entries Name: Farrow & Ball Location: 15, High Street, Esher, KT10 9RL Classification: Wallpapers & Wall Coverings Status: Active Positional Accuracy: Automatically positioned to the address	A6SE (S)	74	-	514027 164767
113	Contemporary Trade Directory Entries Name: Coriander Lead Lights Location: 5a, Station Road, Esher, Surrey, KT10 8DY Classification: Stained Glass Designers & Producers Status: Active Positional Accuracy: Automatically positioned to the address	A11NE (NE)	76	-	514613 165867
114	Contemporary Trade Directory Entries Name: Everlasting Gems Location: A, 46, Lower Green Road, Esher, Surrey, KT10 8HD Classification: Mineral Merchants Status: Inactive Positional Accuracy: Manually positioned to the address or location	A11NW (NE)	88	-	514358 165862
115	Contemporary Trade Directory Entries Name: Cleaners Esher Location: 28, High Street, Esher, Surrey, KT10 9RT Classification: Cleaning Services - Domestic Status: Inactive Positional Accuracy: Automatically positioned to the address	A6SE (S)	93	-	513963 164783
116	Contemporary Trade Directory Entries Name: Kings Water Coolers Location: 70, The Woodlands, Esher, Surrey, KT10 8BZ Classification: Water Coolers Status: Inactive Positional Accuracy: Automatically positioned to the address	A11NW (N)	112	-	514208 165859
116	Contemporary Trade Directory Entries Name: Kings Water Coolers Location: 70, The Woodlands, Esher, Surrey, KT10 8BZ Classification: Water Coolers Status: Active Positional Accuracy: Automatically positioned to the address	A11NW (N)	112	-	514208 165859
116	Contemporary Trade Directory Entries Name: Pembrookshire Spring Location: 70, The Woodlands, Esher, Surrey, KT10 8BZ Classification: Water Coolers Status: Inactive Positional Accuracy: Automatically positioned to the address	A11NW (N)	112	-	514208 165859
117	Contemporary Trade Directory Entries Name: Esher Valet T C S Location: 42, High Street, Esher, Surrey, KT10 9QY Classification: Dry Cleaners Status: Inactive Positional Accuracy: Manually positioned to the address or location	A6SE (S)	174	-	513908 164722
117	Contemporary Trade Directory Entries Name: Chem-Dry Gold Location: A, 53, High Street, Esher, Surrey, KT10 9RQ Classification: Carpet, Curtain & Upholstery Cleaners Status: Inactive Positional Accuracy: Automatically positioned to the address	A6SE (S)	188	-	513931 164686
117	Contemporary Trade Directory Entries Name: T H W Cleaning Location: Former, 46, High Street, Esher, KT10 9QY Classification: Commercial Cleaning Services Status: Inactive Positional Accuracy: Automatically positioned to the address	A6SE (S)	189	-	513898 164712
117	Contemporary Trade Directory Entries Name: Pest Control Esher Location: 65a, High Street, Esher, Surrey, KT10 9RQ Classification: Pest & Vermin Control Status: Inactive Positional Accuracy: Automatically positioned to the address	A6SE (S)	220	-	513917 164656
118	Contemporary Trade Directory Entries Name: Kleanse Food Location: 77, Cranbrook Drive, Esher, Surrey, KT10 8DN Classification: Food Products - Manufacturers Status: Active Positional Accuracy: Automatically positioned to the address	A11NW (N)	203	-	514174 165945

Map ID	Details	Quadrant Reference (Compass Direction)	Estimated Distance From Site	Contact	NGR
119	<p>Contemporary Trade Directory Entries</p> <p>Name: Veolia Environmental Services Location: Mill Road, Esher, Surrey, KT10 8AS Classification: Waste Disposal Services Status: Active Positional Accuracy: Manually positioned within the geographical locality</p>	A9NE (NW)	215	-	513466 165790
120	<p>Contemporary Trade Directory Entries</p> <p>Name: Esher Fireplaces Location: 3-5, Church Street, Esher, Surrey, KT10 8QS Classification: Fireplaces & Mantelpieces Status: Active Positional Accuracy: Automatically positioned to the address</p>	A6SE (S)	254	-	513834 164669
120	<p>Contemporary Trade Directory Entries</p> <p>Name: Intra Pharmaceutical Ltd Location: 68, High Street, Esher, Surrey, KT10 9QS Classification: Pharmaceutical Manufacturers & Distributors Status: Inactive Positional Accuracy: Automatically positioned to the address</p>	A2NE (S)	284	-	513833 164639
121	<p>Contemporary Trade Directory Entries</p> <p>Name: Gb Auto Expo Ltd Location: North Lodge, Esher Park Avenue, Esher, KT10 9NP Classification: Car Dealers Status: Active Positional Accuracy: Automatically positioned to the address</p>	A2NE (S)	290	-	513913 164578
121	<p>Contemporary Trade Directory Entries</p> <p>Name: Histon Allvey Location: Williamson House, Claremont Lane, Esher, Surrey, KT10 9DA Classification: Brewers Status: Inactive Positional Accuracy: Automatically positioned to the address</p>	A2NE (S)	321	-	513875 164563
122	<p>Contemporary Trade Directory Entries</p> <p>Name: Onyx Uk Ltd Location: Mill Rd, Esher, Surrey, KT10 8AS Classification: Cleaning Services - Commercial Status: Inactive Positional Accuracy: Manually positioned to the road within the address or location</p>	A9NE (NW)	300	-	513329 165764
123	<p>Contemporary Trade Directory Entries</p> <p>Name: Esher Service Station Location: High St, Esher, Surrey, KT10 9LG Classification: Petrol Filling Stations Status: Inactive Positional Accuracy: Manually positioned to the road within the address or location</p>	A2NE (S)	329	-	513824 164590
123	<p>Contemporary Trade Directory Entries</p> <p>Name: Bewley House Location: Bewley House, Park Road, Esher, KT10 8NP Classification: Engineers - General Status: Inactive Positional Accuracy: Automatically positioned to the address</p>	A2NW (S)	331	-	513794 164594
123	<p>Contemporary Trade Directory Entries</p> <p>Name: Chris Jackson Dry Cleaners Location: 84, High Street, Esher, Surrey, KT10 9QJ Classification: Dry Cleaners Status: Active Positional Accuracy: Automatically positioned to the address</p>	A2NW (S)	338	-	513802 164586
123	<p>Contemporary Trade Directory Entries</p> <p>Name: Colours Of Esher Location: 94, High Street, Esher, Surrey, KT10 9QJ Classification: Paint Spraying Equipment & Accessories Status: Inactive Positional Accuracy: Automatically positioned to the address</p>	A2NW (S)	360	-	513789 164566
124	<p>Contemporary Trade Directory Entries</p> <p>Name: Globe Micro System Location: Unit D7, Sandown Industrial Park, Mill Road, Esher, Surrey, KT10 8BL Classification: Medical Equipment Manufacturers Status: Active Positional Accuracy: Automatically positioned to the address</p>	A9NE (NW)	372	-	513261 165791
124	<p>Contemporary Trade Directory Entries</p> <p>Name: Globe A M T Location: Unit D7, Sandown Industrial Park, Mill Road, Esher, KT10 8BL Classification: Medical Equipment Manufacturers Status: Inactive Positional Accuracy: Automatically positioned to the address</p>	A9NE (NW)	372	-	513261 165791