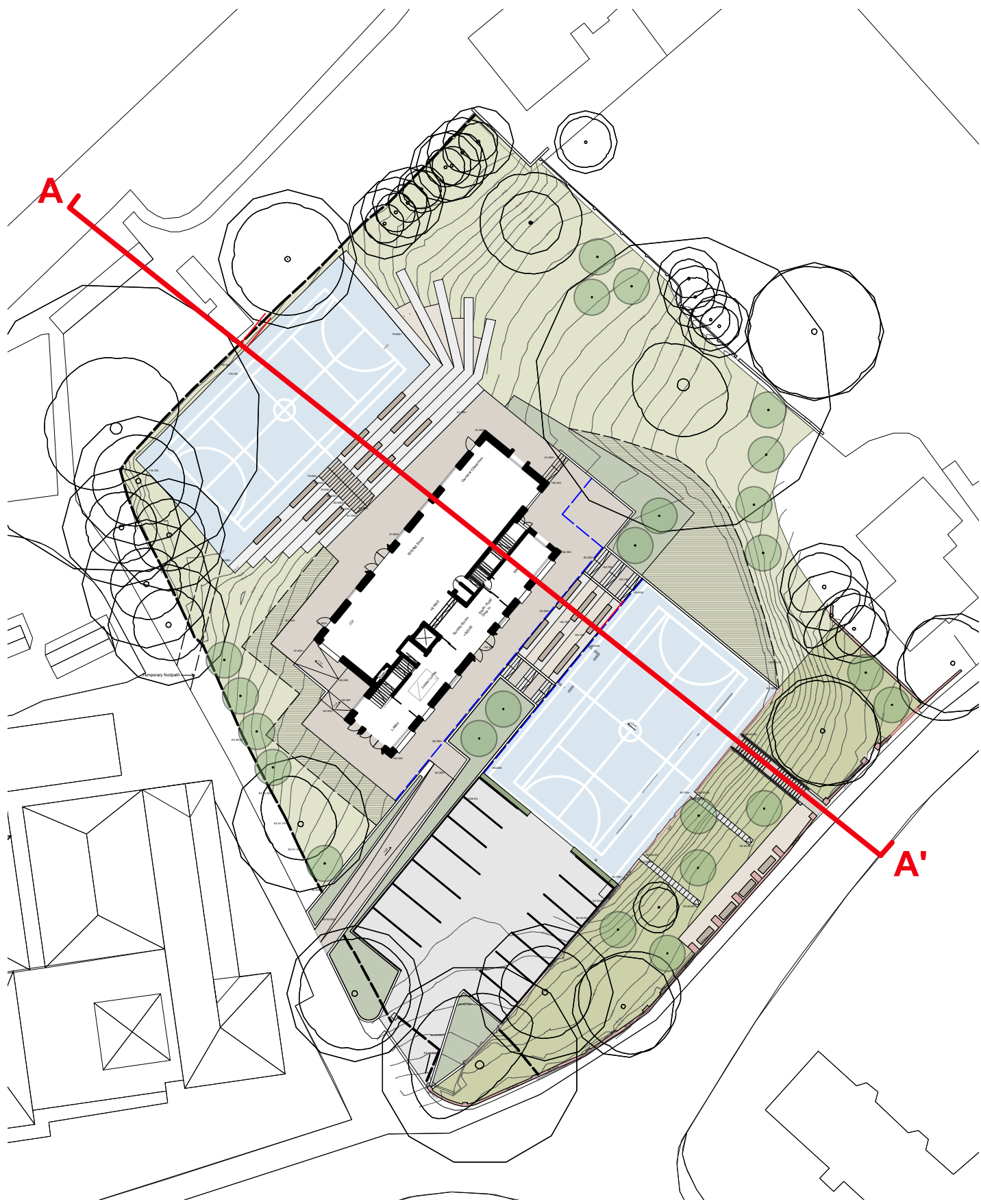


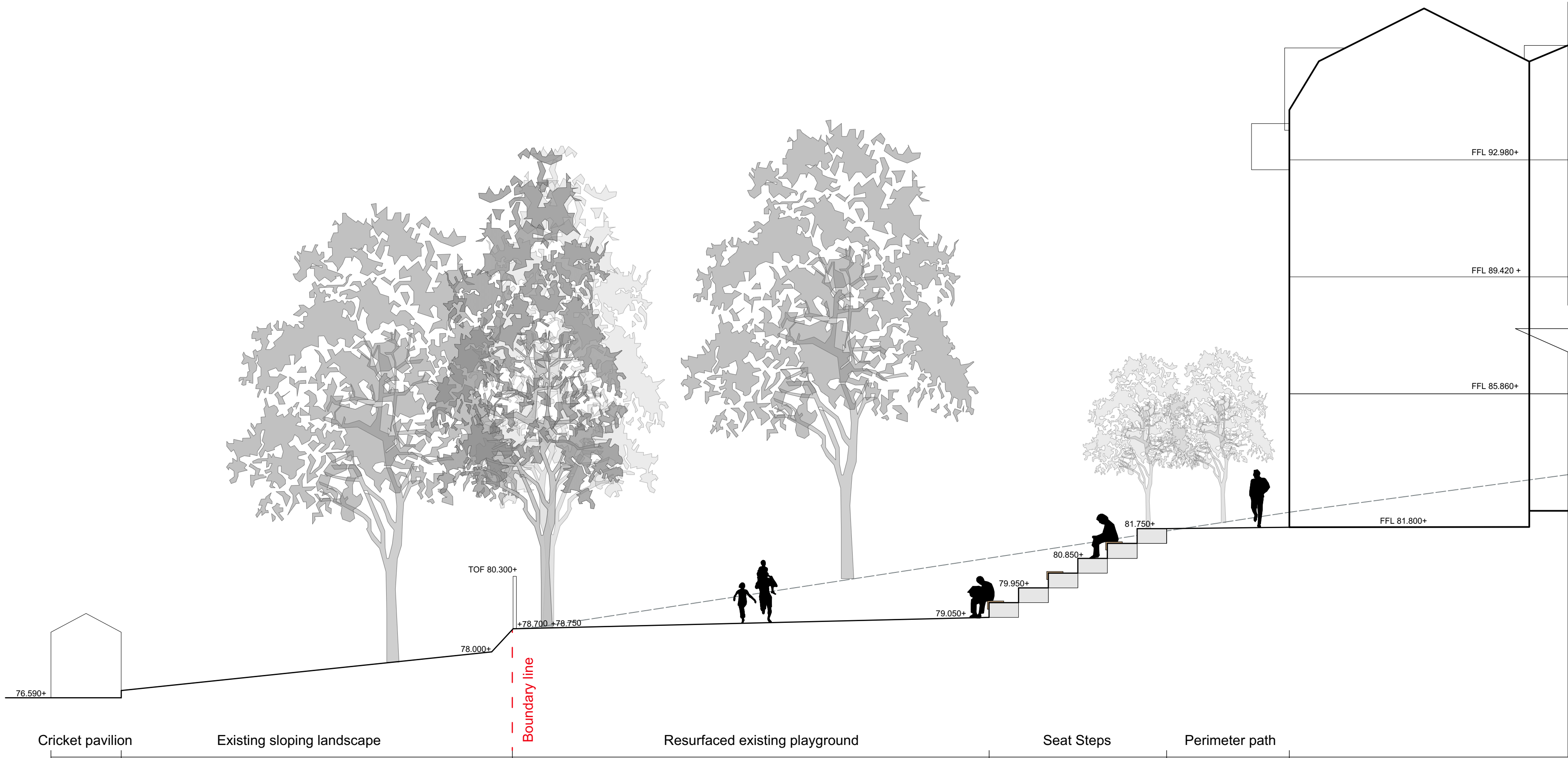
- NOTES:
1. Do not scale from this drawing.
 2. Always work to noted dimensions.
 3. All dimensions are in millimetres unless otherwise stated.
 4. All setting out, levels and dimensions to be agreed on site.
 5. The dimensions of all materials must be checked on site before being laid out.
 6. This drawing must be read with the relevant specification clauses and detail drawings.
 7. Order of construction and setting out to be agreed on site.

LOCATION PLAN

KEY



Section Location Plan NTS




SECTION A-A'



SCALE 1:100

Revision	Date	Description	Drawn	Apprvd.
XX	XX-XX-XX	XX-XX-XX	XX	XX



Planit I.E. Limited

E: info@planit-ie.com W: planit-ie.com

MANCHESTER

2 Back Grafton St., Altrincham, WA14 1DY

T: 0161 928 9281

LONDON

Unit 6 Waterside, 44-48 Wharf Road, London, N1 7UX

T: 0207 253 5678

LIVERPOOL

No. 8 Princes Parade, Princes Dock, Liverpool, L3 1DL

T: 0151 705 6746

Client John Lyon School

Project Oldfield House

Drg Title Section A-A'

Created on	Created by	Approved by
08.03.2019	FM	JN

Scale	Size	Workstage
1:200	A1	PLANNING

Drg No.	Suitability	Revision
PL206-03-SK-400		00