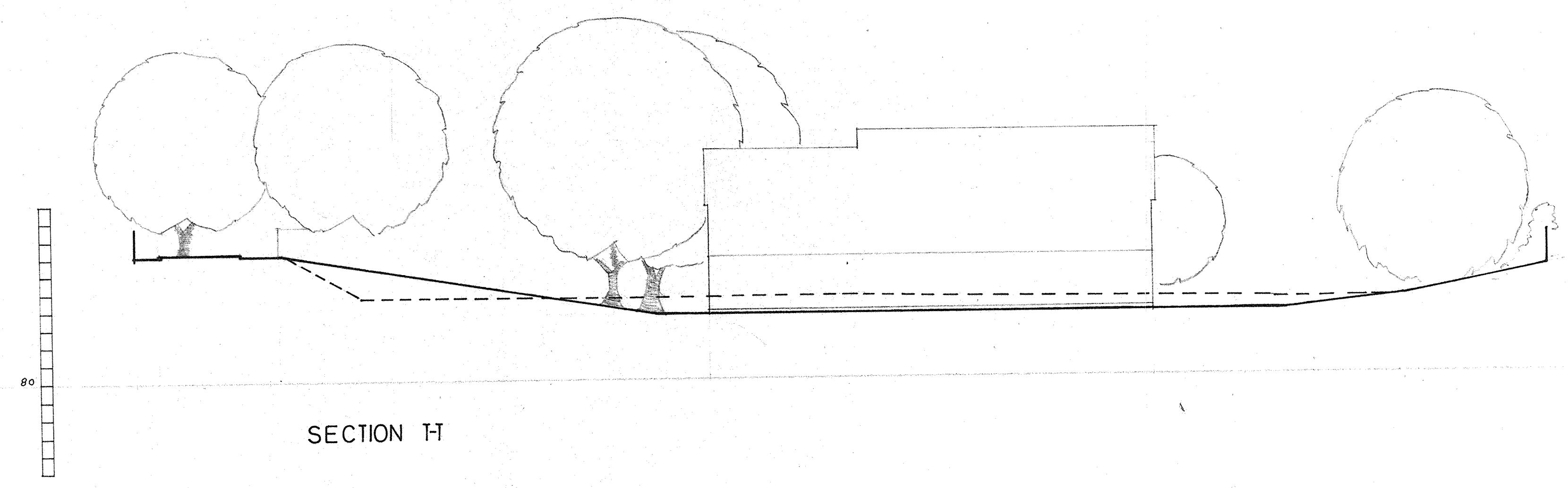
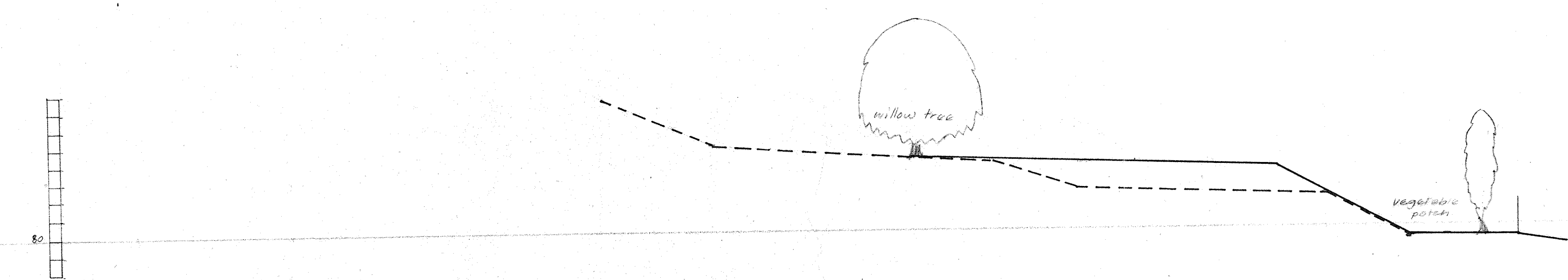


SECTION S-S



SECTION T-T



SECTION U-U

| Issue | Date    | Amendment   |
|-------|---------|---|
| A     | 2.11.79 | Section S-S amended<br>St. steps<br>Section U-U added |

**The John Lyon  
School-Harrow**

Drawing **SITE SECTIONS**

Scale 1:200 Date may 1979 Drawn by fs

**630 09 A**

**Richard Sheppard, Robson & Partners**  
Architects  
77 Parkway, Camden Town, London NW1 7PU  
Telephone: 01-485 4161