







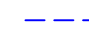
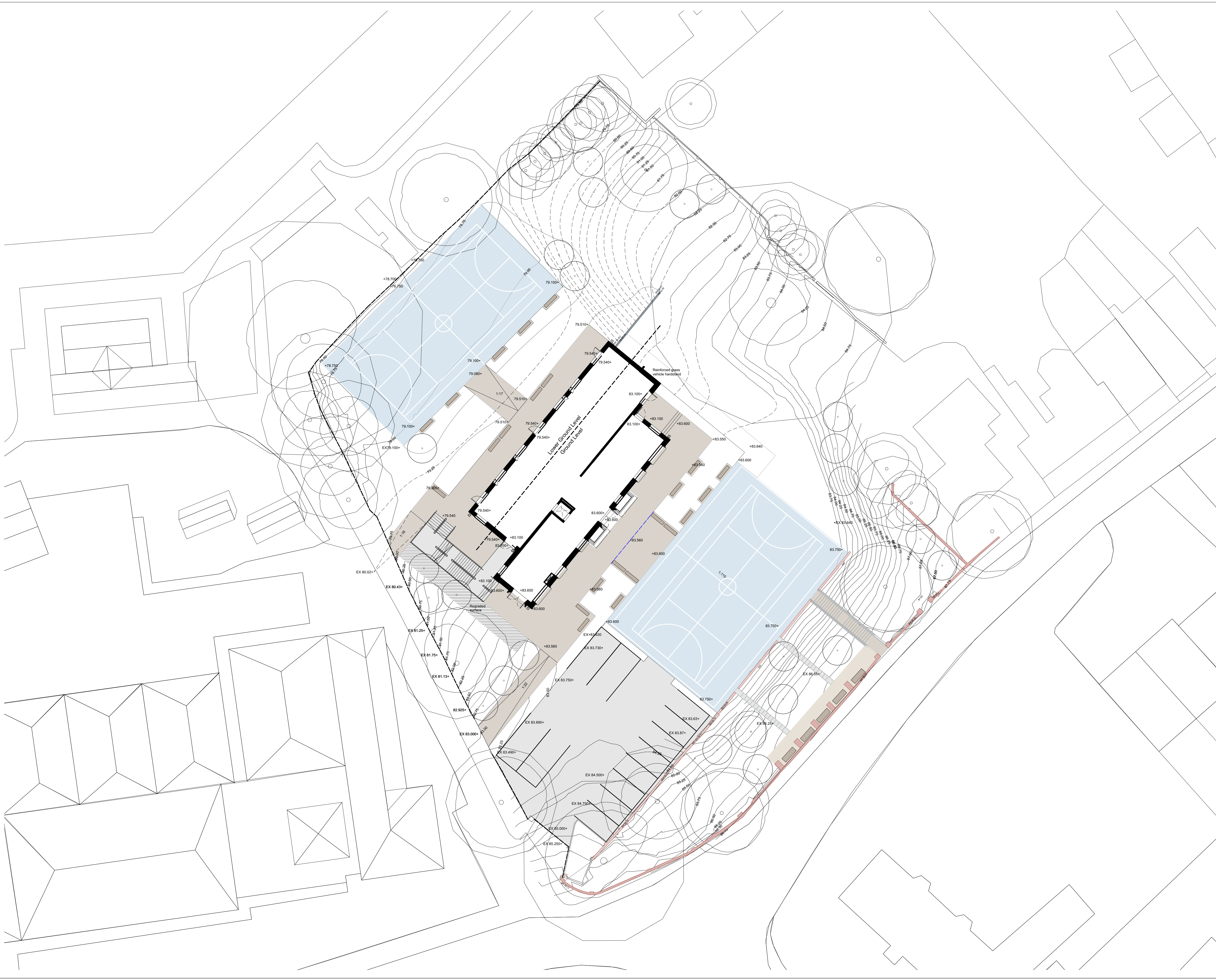


- NOTES:**
1. Do not scale from this drawing.
 2. Always work to noted dimensions.
 3. All dimensions are in millimetres unless otherwise stated.
 4. All setting out, levels and dimensions to be agreed on site.
 5. The dimensions of all materials must be checked on site before being laid out.
 6. This drawing must be read with the relevant specification clauses and detail drawings.
 7. Order of construction and setting out to be agreed on site.

LOCATION PLAN

KEY

-  Coloured Asphalt - Built-up to allow for weight of Fire Engine
-  450mm x 450mm concrete slab - To match/reflect existing materials on site
-  Asphalt - Built-up to allow for weight of Fire Engine
-  400mm x 1900mm timber seats
-  Buff colour self binding gravel
-  Concrete step unit with visibility inset To match existing on site
-  Existing Retaining Wall
-  Proposed Retaining Wall
-  Proposed Drainage



Revision	Date	Description	Drawn	Apprvd.
00	12.04.19	PLANNING	FM	JN

Planit I.E. Limited
 E: info@planit-ie.com W: planit-ie.com
MANCHESTER
 2 Back Grafton St., Altrincham, WA14 1DY
 T: 0161 928 9281
LONDON
 Unit 6 Waterside, 44-48 Wharf Road, London, N1 7UX
 T: 0207 253 5678
LIVERPOOL
 Tempest 5.3, 12 Tithebarn Street, Liverpool, L2 2DT
 T: 0151 363 1230

Client John Lyon School

Project Oldfield House

Drg Title Landscape Hardworks Plan

Created on 23.10.2019 Created by CW Approved by JN

Scale 1:200 Size A1 Workstage Planning

Drg No. PL2068-03-GA-101 Suitability Revision 01