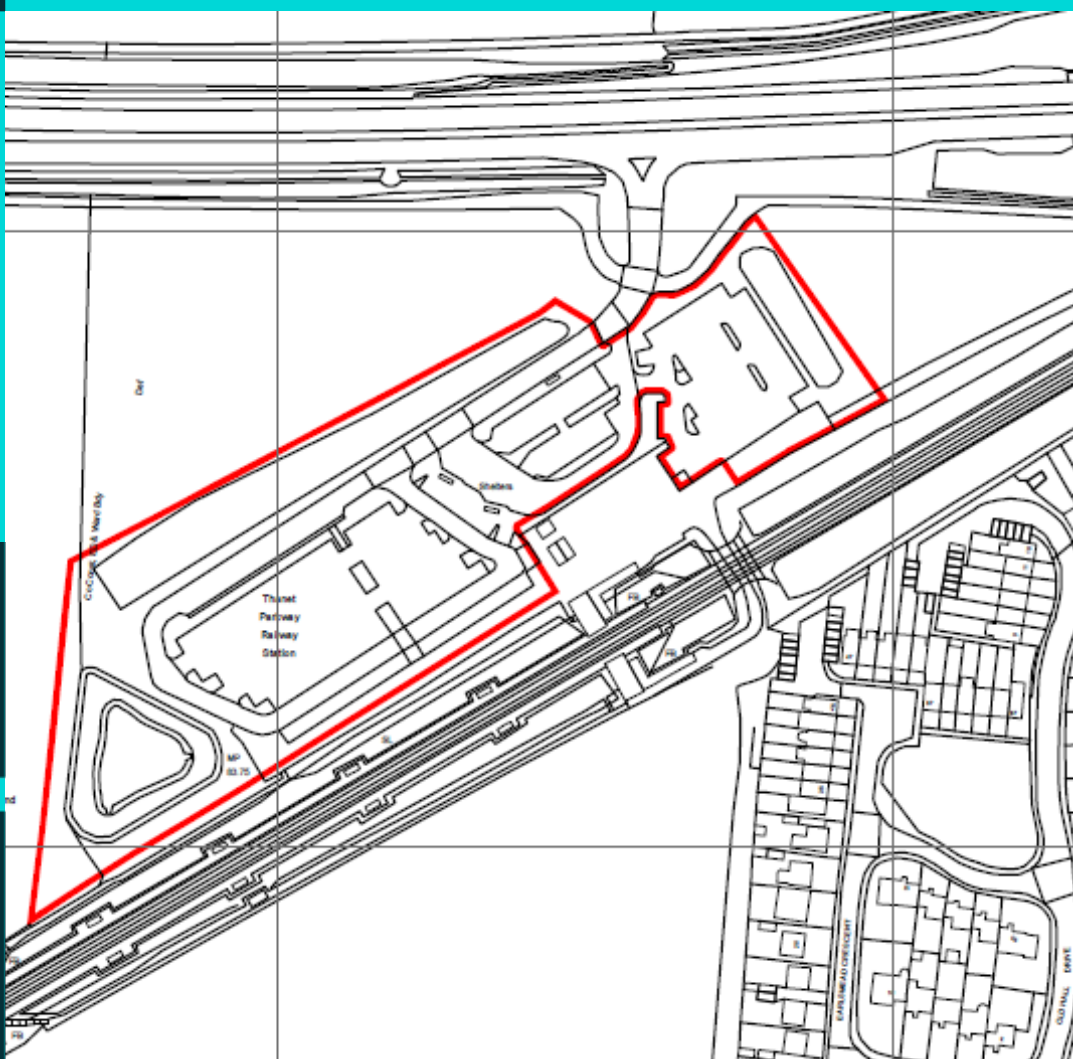


TO LET Car Park

Car Park, Thanet Parkway Station
A299 Ramsgate, CT12 5LQ



Contact

Mark Frostick 07785 522958
mark.frostick@rapleys.com

Geoff Sayer 07769 671488
geoff.sayer@rapleys.com

Location

The car park is located adjoining the new Thanet Parkway Railway station, a £35 million development opening shortly on the Ashford International to Ramsgate Line, close to the village of Cliffsend.

The station is accessed off the A299 close to its junction with the A256 allowing access to Ramsgate and the rest of the Isle of Thanet. The wider urban area of Thanet, which comprises Ramsgate, Margate and Broadstairs has a population of circa 140,000.

Description

The property will consist of a newly developed purpose built car park of circa 293 parking spaces serving a main line station. The car park will be accessed from a traffic light controlled junction. A number of the spaces to the east of the site have been earmarked for EV charging and will be let to an operator on a separate agreement.

Rating

The property has not yet been assessed.

Interested parties are advised to make their own enquiries to the local authority regarding the rates liability and any reliefs that may be available.

Further information is also available at www.gov.uk/calculate-your-business-rates.

Terms and Tenure

Leasehold only; please note the freehold is not available. The property is available by way of a new lease. Proposals invited for a base rent with a turnover based top-up or on a rack rent basis.

VAT

All figures quoted are exclusive of Value Added Tax, which will be charged at the prevailing rate.

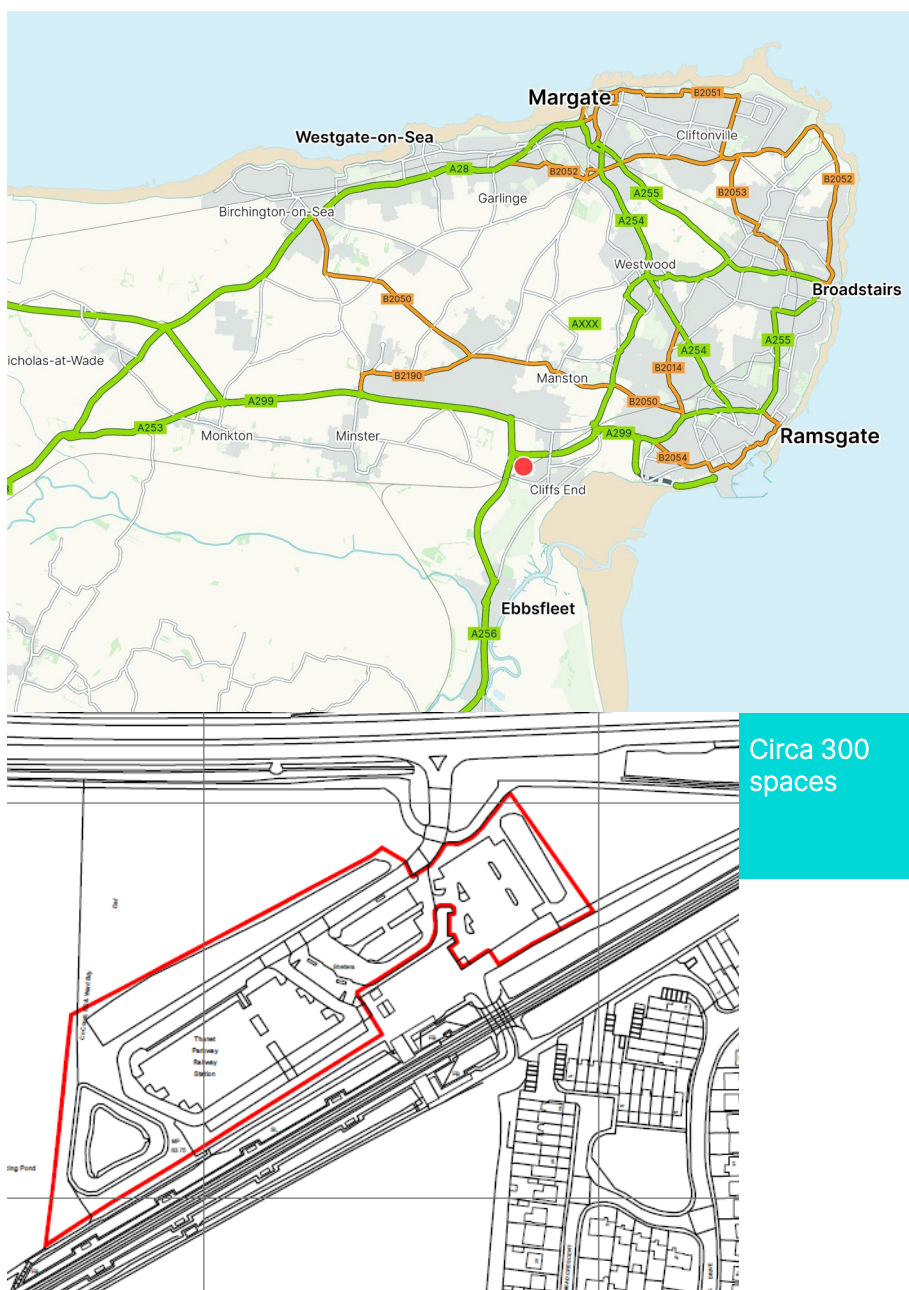
Viewing

Strictly via the sole selling agents.

Car park for brand new railway station opening July 2023

Circa 300 parking spaces exclusively serving the station

Accessed off A299





For further details contact:
Mark Frostick 07785 522958
mark.frostick@rapleys.com
Geoff Sayer 07769 671488
geoff.sayer@rapleys.com

Rapleys LLP is registered as a Limited Liability Partnership in England and Wales.
Registration No: OC308311. Registered Office at Unit 3, Incubator One, Alconbury Weald,
Huntingdon, Cambridgeshire PE28 4XA. Regulated by RICS.
Any maps are for identification purposes only and should not be relied upon for accuracy.
Crown Copyright and database rights 2018 Licence No. 100004619.
Misrepresentation Act: These particulars are produced in good faith and believed to be
correct. Neither Rapleys, their joint agents (where applicable) or their client guarantees their
accuracy and they are not intended to form any part of a contract. No person in the
employment of Rapleys or their joint agents has authority to give any representation or
warranty in respect of this property. All prices or rents are quoted exclusive of VAT. These
particulars were produced in May 2023.

rapleys.com
0370 777 6292

RAPLEYS