

Sue Ryder new store acquisitions

Sue Ryder permanent store requirements

Sue Ryder has large format stores operating throughout the country.

Location Nationwide

Type Retail parks and standalone is the preference, will consider high street options where there is parking

Size 1,500 – 5,000 sq. ft.
Would consider larger

Tenure Leasehold

Timing Available immediately

Sue Ryder temporary store requirements

Location Nationwide

Type Shopping Centres

Size 2,000 – 5,000 sq. ft.

Tenure Temporary leasehold

Timing Available immediately

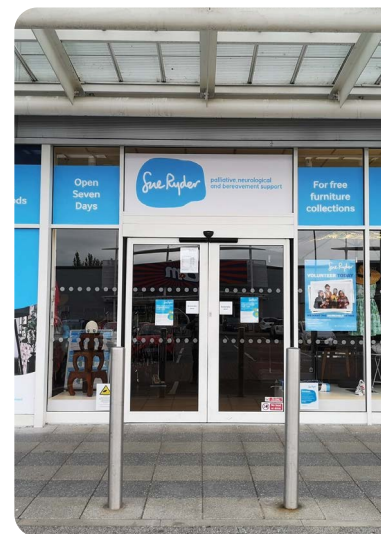
Contacts

Rian Dunne 07780 209 737
rian.dunne@rapleys.com

Rob Fraser 07894 605 513
rob.fraser@rapleys.com

Ella Traynor 07958 028 582
ella.traynor@rapleys.com

RAPLEYS





At Sue Ryder we provide vital end-of-life care and bereavement support. We have almost 400 stores that play a key role in raising the £54m needed each year to provide our vital support.

How we're raising vital support and improving communities through our charity stores

As one of the UK's largest charity retailers, we are expert at what we do. We care about people and the planet and at Sue Ryder we re-use, recycle and re-sell over 15,000 tonnes of donated items a year that might otherwise end up in landfill.

We want to help and inspire our communities to reduce, re-use and recycle wherever we can and are continually looking to reduce our impact on the environment, through:

- Inspiring people to attend our in-store workshops where upcycling teams take the time to transform and repair pre-loved furniture and clothes.

- Reducing the need for new clothes and goods and decreasing this waste by buying and reusing pre-loved items as much as possible.
- Donating pre-loved items and giving them a second chance to help reduce the environmental impact of manufacturing new items.

So, when people shop with us – in-store or online – they'll not only be supporting people at the end of their life and those who are struggling with grief – they'll be helping to care for the planet too.



Because no one should face death or grief alone