

## LEASE ASSIGNMENT

### Industrial Unit

Units 4/5 Skyport Industrial Estate, Harmondsworth  
West Drayton UB7 0LB

#### Key information

- Prominent industrial Unit
- Unit 4 – 1,176 sq m (12,656 sq ft)  
Unit 5 – 1,170 sq m (12,596 sq ft)
- Available by way of a Lease Assignment
- Potential for alternative uses subject to the necessary consents

#### Contact

James Hutton – 07917 567 026  
james.hutton@rapleys.com

Tom Hutchings – 07345 425 598  
tom.hutchings@rapleys.com

Tim Richards – 07917 032674  
tim.richards@rapleys.com



[Video Tour](#)

## Location

Situated on Skyport Industrial Estate in Harmondsworth, the premises benefit from a strategic West London location just minutes from Heathrow Airport, making them ideal for logistics, distribution, and airport-related operations.

The estate provides quick connections to the M4 and M25, offering efficient access to Central London, the Thames Valley, and the national motorway network.

West Drayton Station is also nearby, providing additional transport links for staff and visitors.

## Description

Two substantial industrial units providing first-floor office accommodation and ground-floor warehouse space.

The units are interconnected, allowing easy movement between both workshops.

Unit 5 includes two cleaning bays.

The property sits within a self-contained yard with ample parking facilities and EV charging points provided.

## Energy Performance Rating

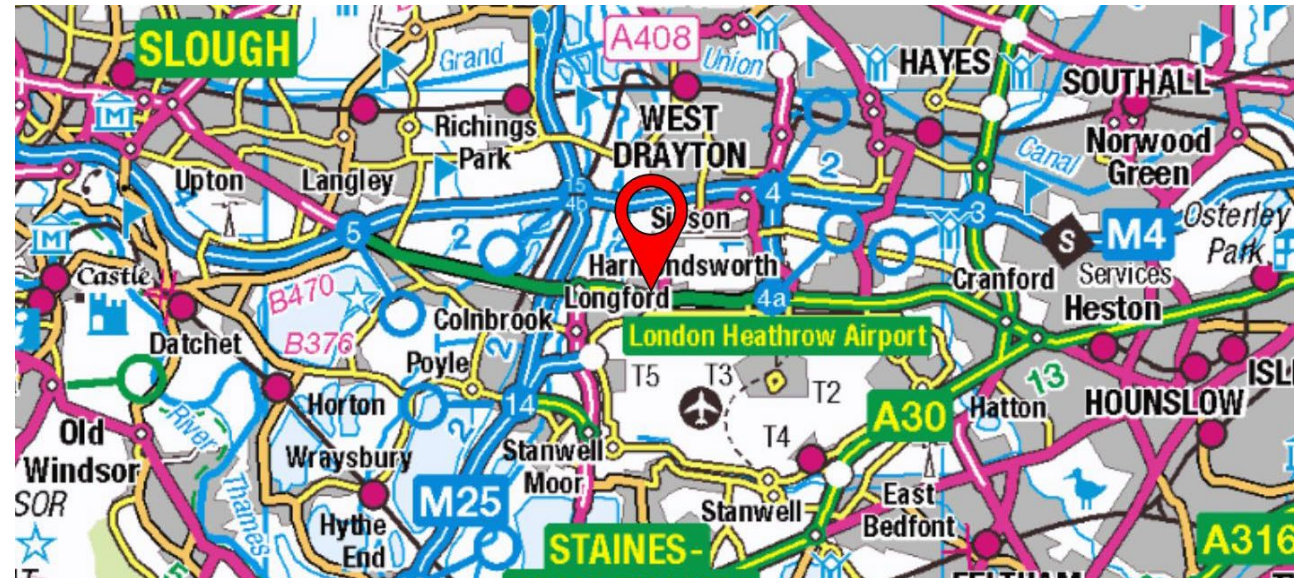
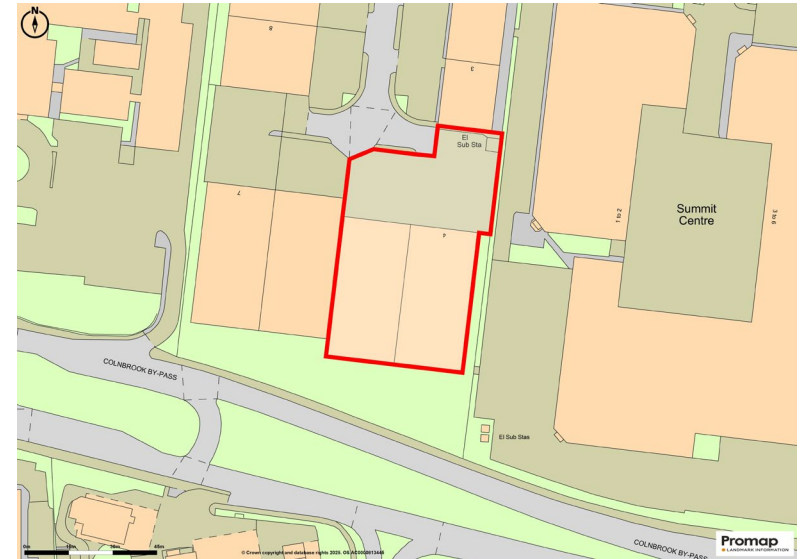
Energy Performance Rating – D (77)

## Accommodation

The property comprises the following approximate floor areas:-

	Sq m	Sq ft
<b>Unit 4</b>		
Warehouse	1,094	11,775
1 <sup>st</sup> Flr Offices	81.85	881
<b>Unit 5</b>		
Warehouse	1,100	11,836
1 <sup>st</sup> Flr Offices	70.70	760
<b>Total</b>	<b>2,346.55</b>	<b>25,252</b>
	Hectare	Acre
Total Site area	0.366	0.904

Note: The above areas have been calculated in accordance with the RICS Code of Measuring Practice on an approximate gross internal basis and must be verified by interested parties. Unless otherwise stated, the site areas/dimensions are scaled from the Promap Mapping System and must be verified by interested parties.



## Terms & Tenure

The property is currently held on a lease until 11<sup>th</sup> September 2026 at a passing rent of £432,000 per annum.

A copy of the lease and related documents are available [here](#).

## VAT

All figures quoted are exclusive of Value Added Tax which will be charged at the prevailing rate.

## Identity Checks/AML

The Money Laundering Regulations require us to conduct checks upon all Prospective Parties. Prospective Parties will need to provide proof of identity and residence. For a Company, any person owning more than 25% must provide the same.

## Rating

We are advised that the Rateable Value for the property is £262,500

The UBR for 2025/26 is 55.5p in the £.

Interested parties are advised to make their own enquiries to the local authority regarding the rates liability and any reliefs that may be available.

Further information is also available at [www.gov.uk/calculate-your-business-rates](http://www.gov.uk/calculate-your-business-rates)

## Viewing

Viewing is strictly via the sole agents



## About us

Rapleys is an **action-oriented** property consultancy, offering building consultancy, commercial, planning and residential property services, operating from seven offices across the UK:

- Birmingham
- Bristol
- Cambridge
- Cardiff
- Edinburgh
- Huntingdon
- London
- Manchester



For further details contact:

James Hutton – 07917 567 026

[james.hutton@rapleys.com](mailto:james.hutton@rapleys.com)

Tom Hutchings – 07345 425 598

[tom.hutchings@rapleys.com](mailto:tom.hutchings@rapleys.com)

Tim Richards – 07917 032674

[tim.richards@rapleys.com](mailto:tim.richards@rapleys.com)

Rapleys LLP is registered as a Limited Liability Partnership in England and Wales.  
Registration No: OC308311. Registered Office at Unit 3a, Incubator One, Alconbury Weald,  
Huntingdon, Cambridgeshire PE28 4XA. Regulated by RICS.

Any maps are for identification purposes only and should not be relied upon for accuracy.  
Crown Copyright and database rights 2018 Licence No. 100004619.

Misrepresentation Act: These particulars are produced in good faith and believed to be correct. Neither Rapleys, their joint agents (where applicable) or their client guarantees their accuracy and they are not intended to form any part of a contract. No person in the employment of Rapleys or their joint agents has authority to give any representation or warranty in respect of this property. All prices or rents are quoted exclusive of VAT. These particulars were produced in November 2025.

[rapleys.com](http://rapleys.com)  
0370 777 6292

CAN RAPLEYS HELP WITH THE BELOW ADDITIONAL PROPERTY SERVICES

### Industries



- Automotive & Roadside
- Care & Retirement
- Charities/Not-for-Profit
- Data Centres
- Education
- Health & Animal Welfare
- Industrial & Logistics
- Life Sciences
- Local Authority
- Offices
- Renewables
- Residential
- Retail & Leisure
- Transport & Infrastructure

### Services



- Building Consultancy
- Commercial Agency
- Compulsory Purchase
- Cost Management
- Development Agency & Consultancy
- Environmental Impact Assessment
- Investment
- Lease Consultancy
- Neighbourly Matters
- Project Management
- Property Management
- Rating
- Strategic Land
- Town Planning
- Valuation
- Viability/Affordable Housing



CREATIVE | PROACTIVE | CONNECTED

**RAPLEYS**